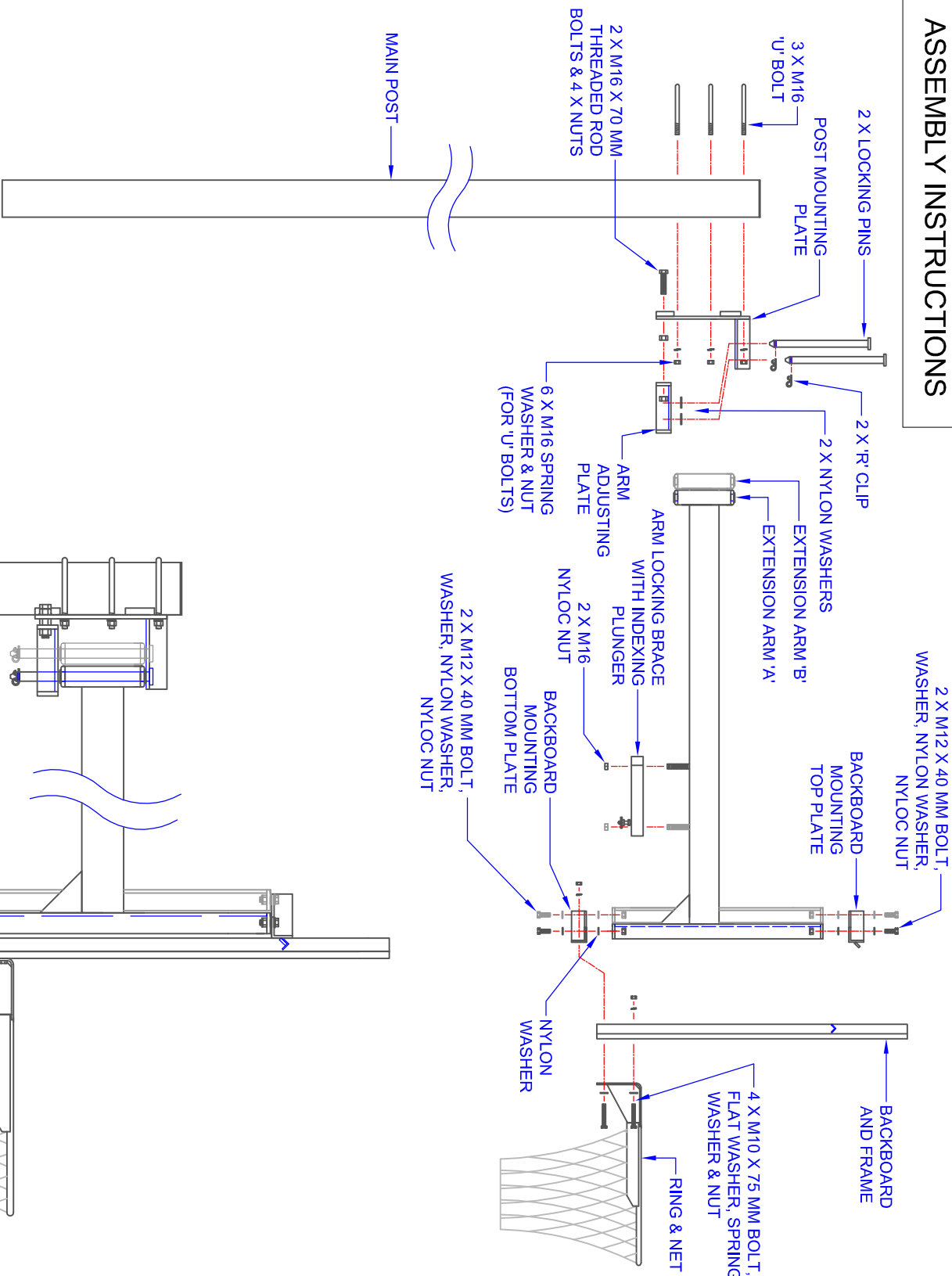


# ASSEMBLY INSTRUCTIONS



## SIDE VIEW

SCALE 1:20

## RAPTOR 170 BASKETBALL TOWER

## CONNECTION DETAIL

SCALE 1:10

## COMPONENTS

QTY	ITEM
1	MAIN POST
1	EXTENSION ARM 'A'
1	EXTENSION ARM 'B'
1	BACKBOARD & FRAME
1	BASKETBALL RING & NET
1	POST MOUNTING PLATE
1	ARM ADJUSTING PLATE
1	ARM LOCKING BRACE
1	LOCKING PIN & 'R' CLIP
1	BACKBOARD MOUNTING TOP PLATE
1	BACKBOARD MOUNTING BOTTOM PLATE
3	M16 'U' BOLT
6	M16 SPRING WASHER & NUT
2	M16 X 70 MM THREADED ROD BOLT
4	M16 NUT
2	M16 NYLOC NUT
2	NYLON WASHERS 23 MM ID
4	M12 X 40 BOLT, WASHER, NYLON WASHER & NYLOC NUT
4	M10 X 75 MM HEXHEAD BOLT, NUT, SPRING WASHER & FLAT WASHER
1	RAPTOR TURNING TOOL

TITLE: RAPTOR 170  
SIDE-SWING BASKETBALL TOWER

DRAWING NUMBER: RAPTOR 170 ASSEMBLY SHEET 1 OF 2

WEIGHT: - DATE: 07/01/13



Oz Ring Pty Ltd

Trading as:

Play Hard Sports Equipment

ABN 79 066 094 559

24 Ern Harley Drive

Burleigh Heads Qld 4220

Phone: (07) 5593 4494

Fax: (07) 5593 4338

Website: [www.playhardsports.com.au](http://www.playhardsports.com.au)

Email: [email@playhardsports.com.au](mailto:email@playhardsports.com.au)