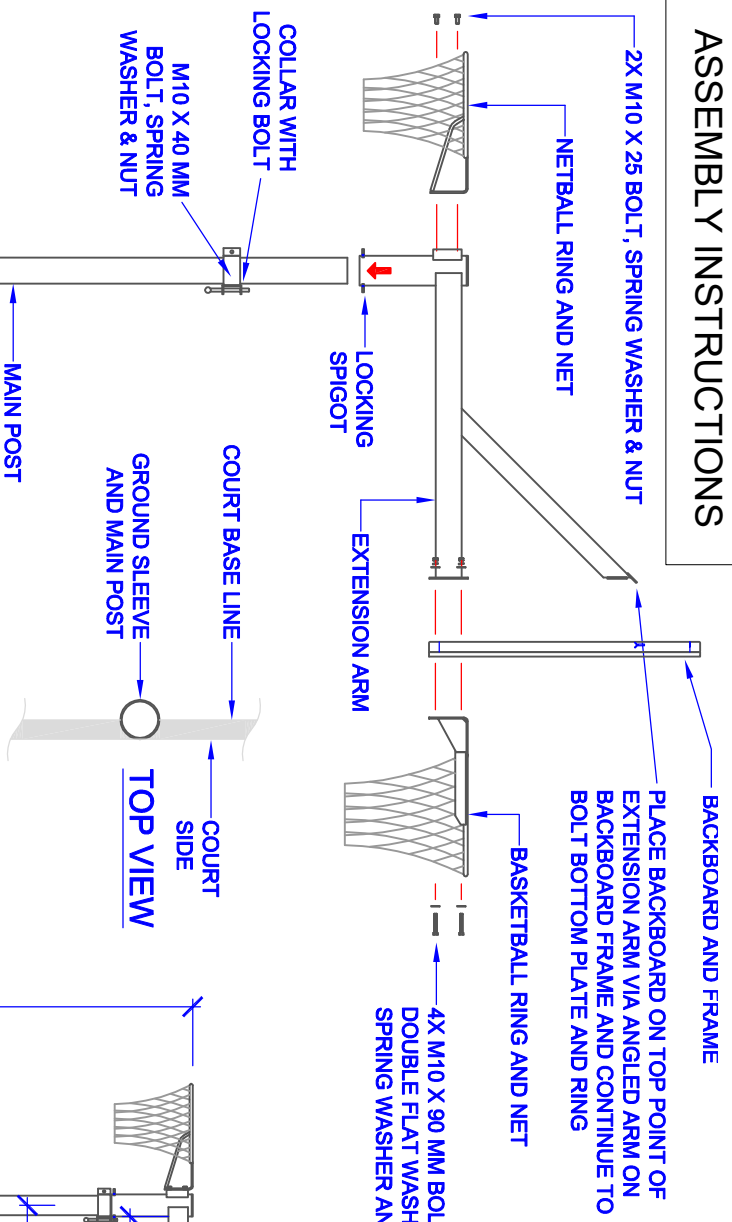
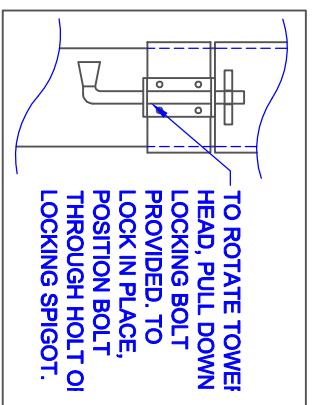


ASSEMBLY INSTRUCTIONS



PLACE BACKBOARD ON TOP POINT OF EXTENSION ARM VIA ANGLED ARM ON BACKBOARD FRAME AND CONTINUE TO BOLT BOTTOM PLATE AND RING

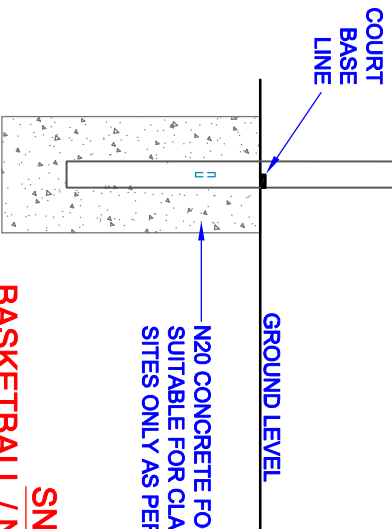
4X M10 X 90 MM BOLT, DOUBLE FLAT WASHER, SPRING WASHER AND NUT



- INSTALLATION:**
- 1) SET POST USING FOOTING DETAILS PROVIDED <ENSURE CONCRETE HAS SET BEFORE NEXT STEP>
 - 2) MOUNT EXTENSION ARM & COLLAR ON POST
 - 3) POSITION ARM TO DESIRED ALIGNMENT
 - 4) SLIDE COLLAR UP SO THE LOCKING PIN SITS BETWEEN LOCKING SPIGOTS AND BOLT COLLAR TO SECURE

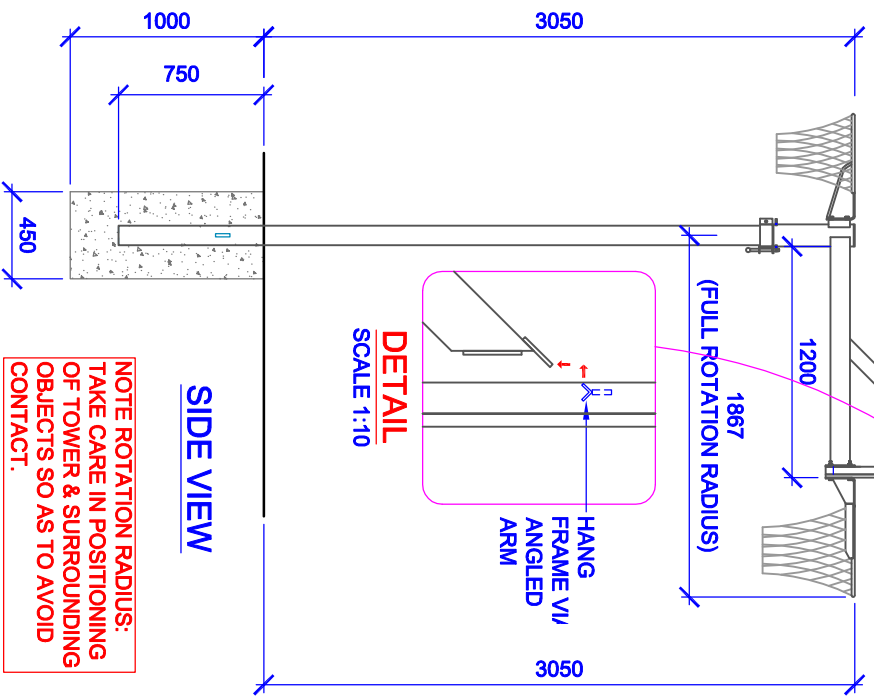
TOWER POSITION

SCALE 1:20



BASKETBALL / NETBALL TOWER

SN90R
SCALE 1:30



NOTE ROTATION RADIUS:
TAKE CARE IN POSITIONING OF TOWER & SURROUNDING OBJECTS SO AS TO AVOID CONTACT.

TOWER POSITION

SCALE 1:40

COMPONENTS

QTY	ITEM
1	MAIN POST
1	EXTENSION ARM
1	COLLAR WITH LOCKING BOLT
1	BACKBOARD AND FRAME
1	BASKETBALL RING AND NET
1	NETBALL RING AND NET
1	SN90r TURNING TOOL
4	M10 X 90 BOLT, SPRING WASHER DOUBLE FLAT WASHER AND NUT
2	M10 X 25 MM BOLT, SPRING WASHER & NUT
1	M10 X 40 MM BOLT, SPRING WASHER & NUT
-	-
-	-

TITLE: SN90r - ROTATING BASKETBALL / NETBALL TOWER

DRAWING NUMBER: SN90r ASSEMBLY

WEIGHT:	CUBIC MEASURE
-	-

Oz Ring Pty Ltd

Trading as:

Play Hard Sports Equipment

ABN 79 066 094 559

24 Ern Harley Drive

Burleigh Heads Qld 4220

Phone: (07) 5593 4494

Fax: (07) 5593 4338

Website: www.playhardsports.com.au

Email: email@playhardsports.com.au