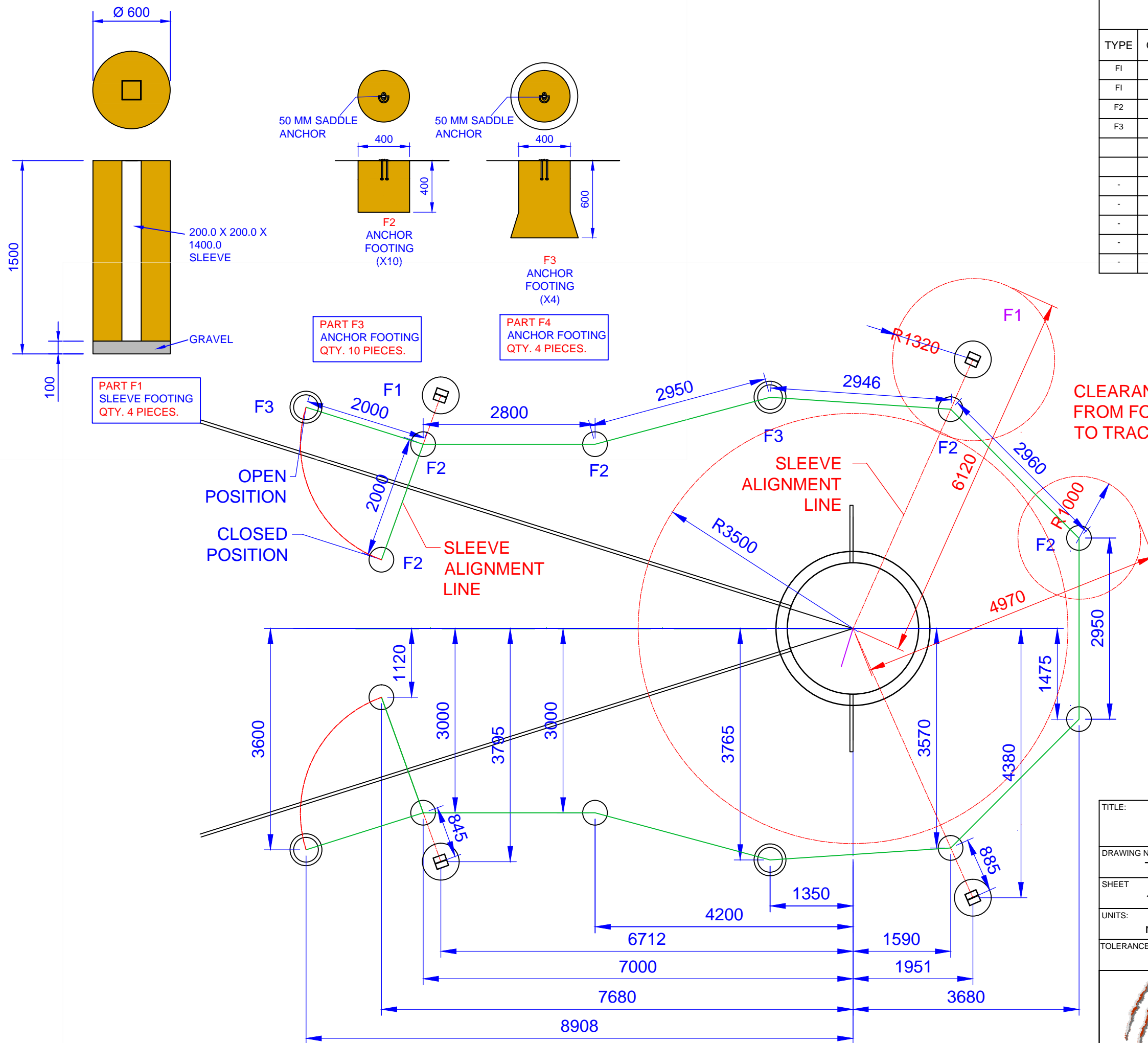


**CUTTING LIST**  
FOR ONE UNIT ONLY

TYPE	QTY	MATERIAL	LENGTH	TOTAL
F1	4	GROUND SLEEVE FOOTINGS	-	-
F1	4	GROUND SLEEVE COVERS	-	-
F2	10	NET ROPE ANCHORS	-	-
F3	4	ROPE AND WINCH ANCHORS	-	-
	14	SADDLE ANCHORS	-	-
	28	M10 X 100MM CUP HEAD GAL BOLTS	-	-
	28	M10 GAL NUTS	-	-
-	-	-	-	-
-	-	-	-	-
-	-	-	-	-
-	-	-	-	-



**CLEARANCE FROM FOOTING TO TRACK**

TITLE: THOR - 10 HAMMER CAGE.			
FOOTING			
DRAWING NUMBER: THOR - 10		CHECKED BY: T. B.	
SHEET 1 OF 1		DRAWN BY: RBTO.	
UNITS: m m.		DATE: 9 / 08 / 2017.	
TOLERANCE: 0.0 ± 1.0 0.00 ± 0.5 0.000 ± 0.2		SCALE: - : -	
		SYSTEM: A3	

Oz Ring Pty Ltd  
Trading as:  
Play Hard Sports Equipment  
ABN 79 065 094 559  
24 Em Harley Drive  
Burleigh Heads Qld 4220  
Phone: (07) 5593 4494  
Fax: (07) 5593 4338  
Website: www.playhardsports.com.au  
Email: email@playhardsports.com.au