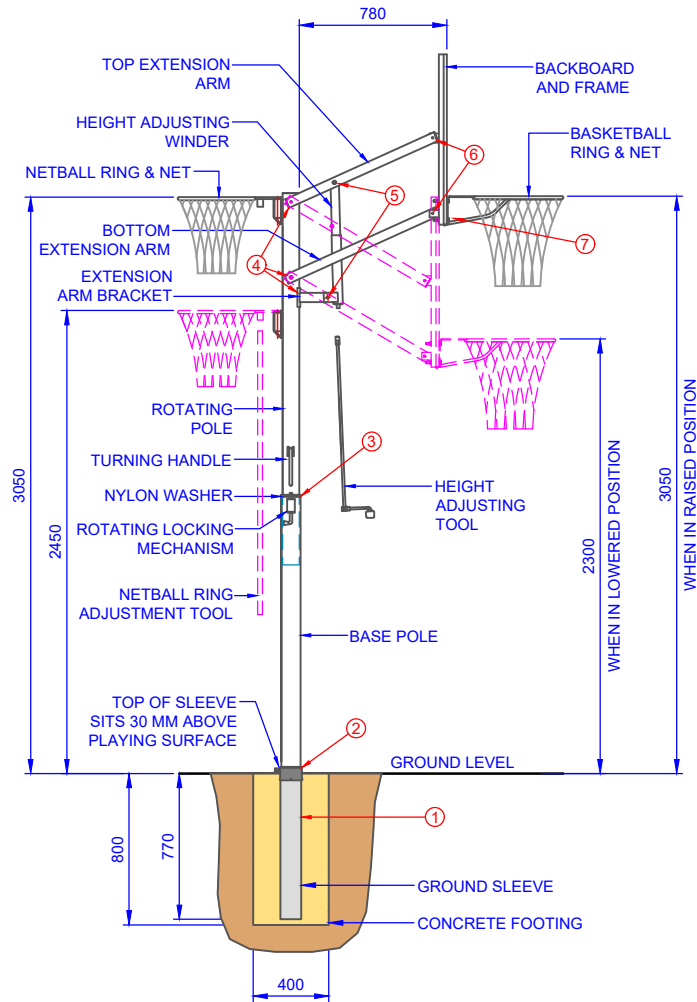


ASSEMBLY INSTRUCTIONS

REFER TO THE PACKING LIST FOR A COMPLETE LIST OF COMPONENTS AND PART NUMBERS

FOLLOW THE STEPS TO ASSEMBLE AND ERECT YOUR POWER PRO BASKETBALL TOWER.



FOR PART	QTY	FASTENERS / BOLT LIST
B-E	1	M10 X 170 MM BOLT AND NYLOC NUTS
	2	M10 NYLON WASHERS (TO BE GLUED)
	2	M10 WASHERS
B-D	1	M10 X 170 MM BOLT AND NYLOC NUTS
	2	M10 NYLON WASHERS (TO BE GLUED)
	2	M10 WASHERS
J-D	2	M10 X 50 MM BOLT AND NYLOC NUT
	2	M10 NYLON WASHERS (TO BE GLUED)
	4	M10 WASHERS
J-E	2	M10 X 50 MM BOLT AND NYLOC NUT
	2	M10 NYLON WASHERS (TO BE GLUED)
D-H	1	M12 X 170 MM BOLT AND NYLOC NUT
	2	M12 WASHERS
B-H	1	M10 X 83 MM BOLT AND NYLOC NUT
	2	M10 WASHERS
J-G-F	4	M10 X 75 MM BOLT AND NYLOC NUT
	8	M10 WASHERS
C	1	M12 X 25 MM BOLT
B	1	M5 X 40 MM BOLT & NYLOC (ATTACHED)
-	-	-

- 1) CONCRETE THE GROUND SLEEVE IN POSITION, USE A SPIRIT LEVEL AND LEAVE TO CURE FOR 4 DAYS. (NOTE: TOP OF GROUND SLEEVE SHOULD SIT 30 MM ABOVE PLAYING SURFACE).
- 2) PLACE THE BASE POLE IN THE SLEEVE, ALIGN THE POLE AND TIGHTEN THE SLEEVE BOLT.
- 3) SLIDE THE NYLON WASHER OVER THE BOTTOM OF THE ROTATING POLE AND INSERT INTO THE BASE POLE.
- 4) BOLT THE TWO EXTENSION ARMS TO THE ROTATING POLE (NOTE THE WINDER HOLE IN THE TOP EXTENSION ARM).
- 5) BOLT THE ADJUSTABLE WINDER TO THE EXTENSION ARM BRACKET AND TOP EXTENSION ARM.
- 6) BOLT THE 4 BRACKETS TO THE BACKBOARD FRAME. THEN BOLT THE BACKBOARD FRAME AND BRACKETS TO THE EXTENSION ARMS.
- 7) BOLT THE BASKETBALL RING TO THE BACKBOARD FRAME.
- 8) USING THE HAND TOOL INSERT THE NETBALL RING INTO THE BRACKET ON THE ROTATING POLE.

NOTE:
DO NOT OVER TIGHTEN NYLOC NUTS. THEY SHOULD BE TIGHTENED TO REDUCE PLAY BUT STILL ALLOW THE PIVOTING PARTS TO MOVE WITHOUT TENSION.

TITLE: GAME CHANGER BASKETBALL TOWER	
DRAWING NUMBER: GAME CHANGER ASSEMBLY 1 OF 3	
-	
	
Oz Ring Pty Ltd Trading as: Play Hard Sports Equipment ABN 79 066 094 559 24 Ern Harley Drive Burleigh Heads Qld 4220 Phone: (07) 5593 4494 Fax: (07) 5593 4338 Website: www.playhardsports.com.au Email: email@playhardsports.com.au	