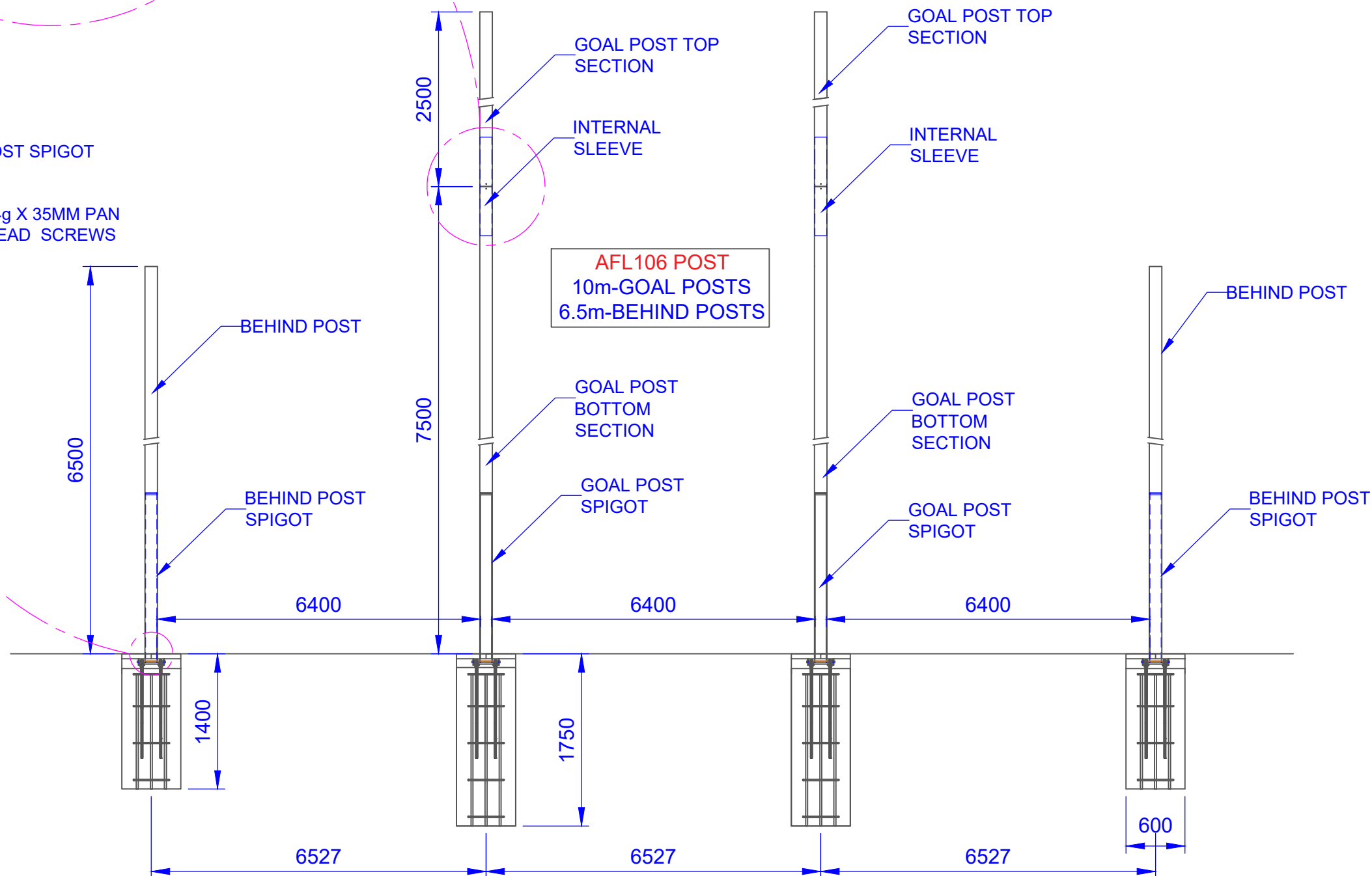


- ASSEMBLY AND INSTALLATION OF THE POLES**
1. JOIN BOTTOM AND TOP SECTION OF THE GOAL POST POST USING THE INTERNAL SLEEVE AND FIX THEM TOGETHER USING 14g X 35 MM PAN HEAD TEK SCREWS.
THE BEHIND POST IS SUPPLIED AS A SINGLE UNIT.
 2. THEN SLIDE THE JOINED POLES INTO THE SPIGOT AND FIX THEM TOGETHER USING THE SCREWS.
BOTH GOAL AND BEHIND POST HAVE SEPARATE POST SPIGOT.
 3. THEN INSERT THE ANGLE MOUNTING PLATES ONTO THE THREADED ROD IN THE FOOTINGS. USE THE BOLTS TO ENSURE THAT THE TWO PLATES ARE AT LEVEL POSITION.
 4. POSITION THE ASSEMBLED POST SUCH THAT THE ROUND BAR AT THE BOTTOM OF THE POLE IS PLACED ON THE GROOVE OF THE MOUNTING PLATES. THEN RAISE THE POST UPRIGHT AND BOLT THE POSTS PROPERLY.



COMPONENTS

QTY	ITEM
4	AFL GOAL POST FOOTINGS
4	AFL BEHIND POST FOOTINGS
8	FOOTING COVER
32	14g X 35 MM PAN HEAD TEK SCREWS
4	GOAL POST TOP SECTION
4	GOAL POST BOTTOM SECTION
4	BEHIND POST
4	GOAL POST INTERNAL SLEEVE
4	GOAL POST SPIGOT
4	BEHIND POST SPIGOT
32	M20 GAL NUTS
32	M20 GAL SPRING WASHER
8	ANGLE MOUNTING PLATES LEFT
8	ANGLE MOUNTING PLATES RIGHT
-	-

TITLE: AR106 - AFL GOALS

DRAWING NUMBER: ASSEMBLY DETAILS 02

DATE: CUBIC MEASURE

PLAY HARD
sports equipment

Oz Ring Pty Ltd
Trading as:
Play Hard Sports Equipment
ABN 79 066 094 559
24 Ern Harley Drive
Burleigh Heads Qld 4220
Phone: (07) 5593 4494
Fax: (07) 5593 4338
Website: www.playhardsports.com.au
Email: email@playhardsports.com.au