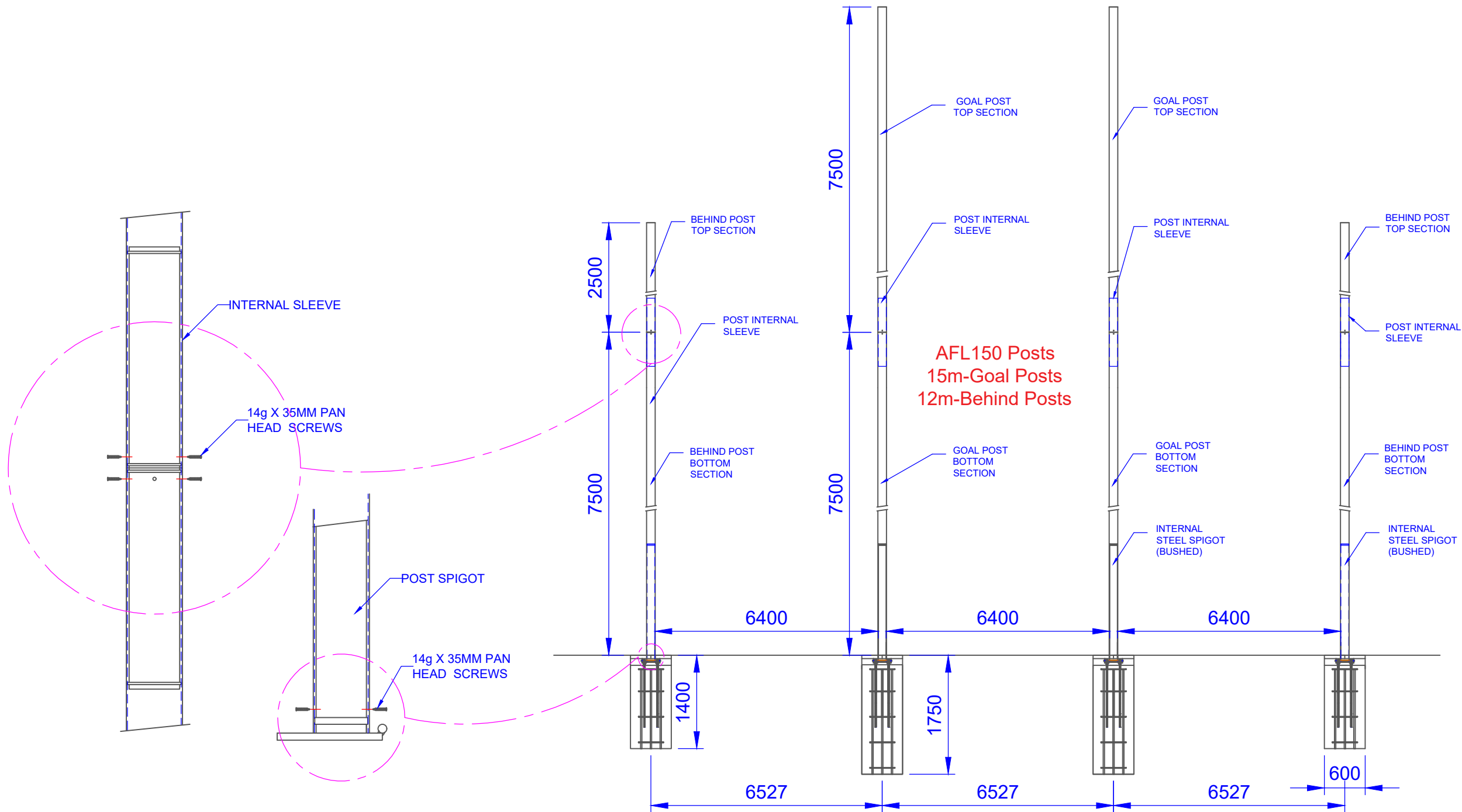


ASSEMBLY INSTRUCTIONS

ASSEMBLY



ASSEMBLY AND INSTALLATION OF THE POLES

1. JOIN BOTTOM AND TOP SECTION OF THE GOAL POST AND BEHIND POST USING THE INTERNAL SLEEVE AND FIX THEM TOGETHER USING 14g X 35 MM PAN HEAD TEK SCREWS.
2. THEN SLIDE THE JOINED POLES INTO THE SPIGOT AND FIX THEM TOGETHER USING THE SCREWS.
3. THEN INSERT THE ANGLE MOUNTING PLATES ONTO THE THREADED ROD IN THE FOOTINGS. USE THE BOLTS TO ENSURE THAT THE TWO PLATES ARE AT LEVEL POSITION.
4. POSITION THE ASSEMBLED POST SUCH THAT THE ROUND BAR AT THE BOTTOM OF THE POLE IS PLACED ON THE GROOVE OF THE MOUNTING PLATES. THEN RAISE THE POST UPRIGHT AND BOLT THE POSTS PROPERLY.

COMPONENTS

QTY	ITEM
4	AFL GOAL POST FOOTINGS
4	AFL BEHIND POST FOOTINGS
8	FOOTING COVER
48	14g X 35 GAL PAN HEAD TEK SCREWS
4	GOAL POST TOP SECTION
4	GOAL POST BOTTOM SECTION
4	BEHIND POST TOP SECTION
4	BEHIND POST BOTTOM SECTION
8	POST INTERNAL SLEEVE
8	GOAL POST SPIGOT
32	M20 GAL NUTS AND GAL WASHERS
32	M20 GAL SPRING WASHER
8	ANGLE MOUNTING BRACKET LEFT
8	ANGLE MOUNTING BRACKET RIGHT
-	-

TITLE: AR150 - AFL GOALS

DRAWING NUMBER: ASSEMBLY

DATE: 04/01/2022 CUBIC MEASURE: -



Oz Ring Pty Ltd
 Trading as:
Play Hard Sports Equipment
 ABN 79 066 094 559
 24 Ern Harley Drive
 Burleigh Heads Qld 4220
 Phone: (07) 5593 4494
 Fax: (07) 5593 4338
 Website: www.playhardsports.com.au
 Email: email@playhardsports.com.au