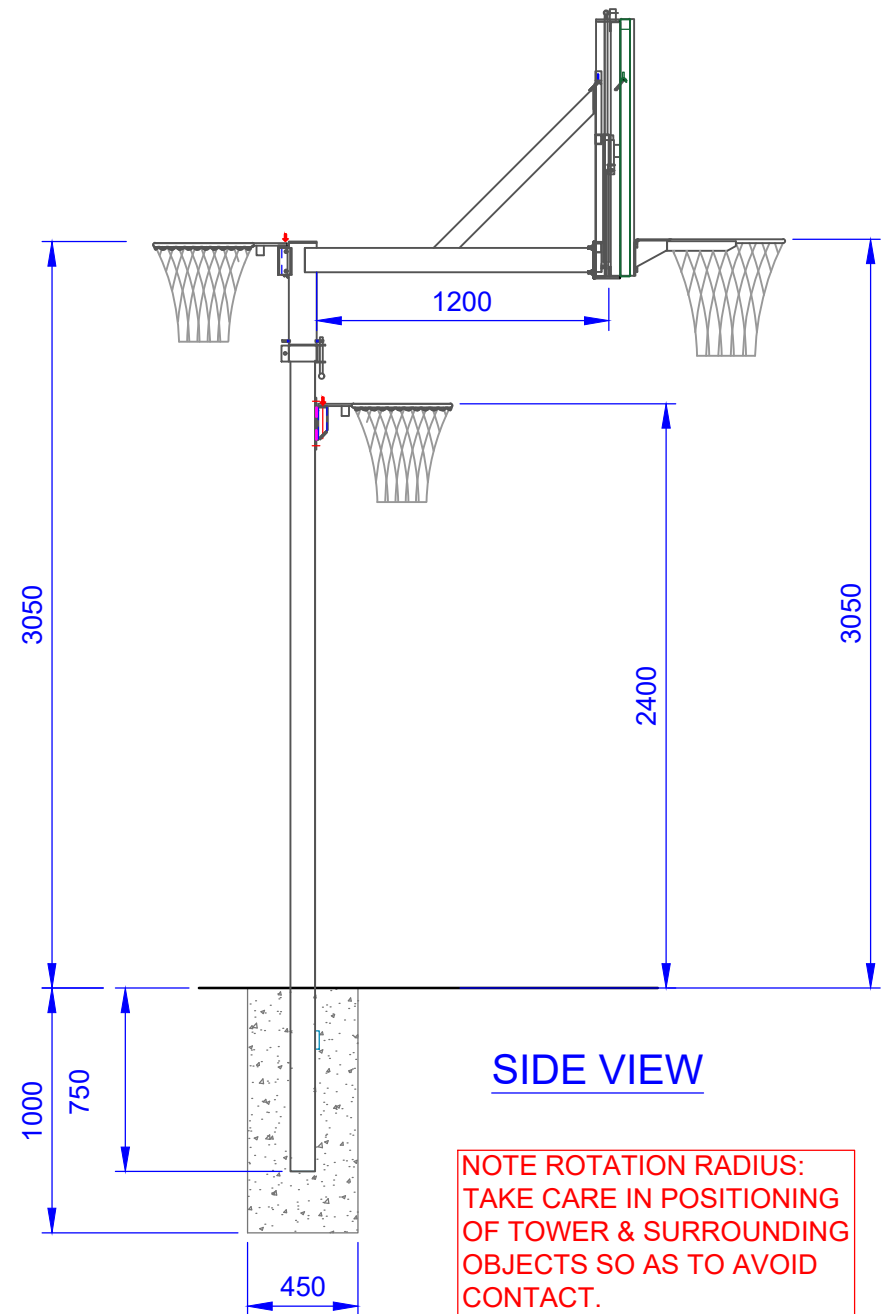


- INSTALLATION:**
1. SET POST USING FOOTING DETAILS PROVIDED AS ORIENTATION SHOWN (REFER ASSEMBLY 2 OF 3 TOWER POSITION DRAWING). <ENSURE CONCRETE HAS SET BEFORE NEXT STEP>
 2. SLIDE THE LOCKING COLLAR OVER THE POST AND THEN MOUNT THE EXTENSION ARM.
 3. POSITION THE EXTENSION ARM TO TYE DESIRED ALIGNMENT.
 4. SLIDE THE COLLAR UP SO THE LOCKING PIN SITS BETWEEN LOCKING SPIGOTS AND BOLT COLLAR TO SECURE.
 5. THEN, ATTACH THE BACKBOARD FRAME AND THE RING TO THE FRAME. REFER ASSEMBLY 3 OF 3 - HEIGHT ADJUSTING FRAME FOR FURTHER DETAILS.
 6. INSERT THE NR31 RING TO THE RING BRACKET AT THE REAR SIDE OF THE EXTENSION ARM.
- GENERAL OPERATING NOTES**
7. USE THE SHFw HAND TOOL TO ADJUST THE BASKETBALL RING HEIGHT.
 8. FOR NETBALL, USE THE SN90r/S125r HAND TOOL TO PULL DOWN THE LOCKING LATCH, ROTATE THE EXTENSION ARM TO SET NETBALL POSITION AND RE-ENGAGE THE LATCH.
 9. TO SET THE NETBALL JUNIOR HEIGHT, USE THE NETBALL REMOVAL TOOL TO TRANSFER THE NETBALL RING FROM TOP BRACKET TO THE BOTTOM BRACKET.



NOTE ROTATION RADIUS:
TAKE CARE IN POSITIONING OF TOWER & SURROUNDING OBJECTS SO AS TO AVOID CONTACT.

QTY	ITEM DESCRIPTION (FOR ONE UNIT)
1	100 MM DIA. MAIN POST
1	100 MM X 100MM EXTENSION ARM
1	B18fh BACKBOARD FRAME
1	B1810 BACKBOARD
1	R11b BASKETBALL RING
1	BASKETBALL RING KIT (NET, CORD, INSTRUCTIONS)
1	NR31 NETBALL RING
1	NR31 NETBALL RING KIT (NET, CORD, INSTRUCTIONS)
1	COLLAR WITH SPRING BOLT
1	S125r TURNING TOOL
1	NETBALL REMOVAL TOOL
1	NR31 NETBALL RING BRACKET (POLE)
1	NR31 NETBALL RING BRACKET (EXTENSION ARM)
1	HEIGHT ADJUSTABLE FRAME (SHFw)
1	SHF TURNING TOOL
BOLT KIT	
4	M10 X 125 MM GAL HEX BOLT, DOUBLE WASHER, SPRING WASHER & NUT
2	M10 X 45 MM GAL HEX BOLT, FLAT WAHSER & NYLOC NUT
1	GAS STRUT FITTED TO SHFw (460N-POLYBOARD & 800N FOR GLASS BACKBOARD)
1	M10 X 50 MM GAL BOLT, SPRING WASHER & NUT
4	M10 X 30 MM ZINC-COATED SOCKET HEADED CAP SCREWS, FLAT WASHER & NYLOC NUT
2	M10 X 150 MM GAL HEX BOLT, FLAT WASHER & NYLOC NUT
1	M10 X 115 MM GAL HEX BOLT, FLAT WASHER & SPRING WASHER
1	M10 X 130 MM GAL HEX BOLT & NYLOC NUT

NOTE FOR CUSTOMER:
SOME OF THE PARTS AND BOLT KIT HAVE ALREADY BEEN PRE-ASSEMBLED.

SN90R
BASKETBALL / NETBALL TOWER
SCALE 1:30

TITLE: SN90r MULTIPLAY ROTATING BASKETBALL / NETBALL TOWER ASSEMBLY 1 OF 3	
DRAWING NUMBER: SN90r MULTIPLAY SYSTEM	
WEIGHT: -	CUBIC MEASURE



Oz Ring Pty Ltd
Trading as:
Play Hard Sports Equipment
ABN 79 066 094 559
24 Ern Harley Drive
Burleigh Heads Qld 4220
Phone: (07) 5593 4494
Fax: (07) 5593 4338
Website: www.playhardsports.com.au
Email: email@playhardsports.com.au