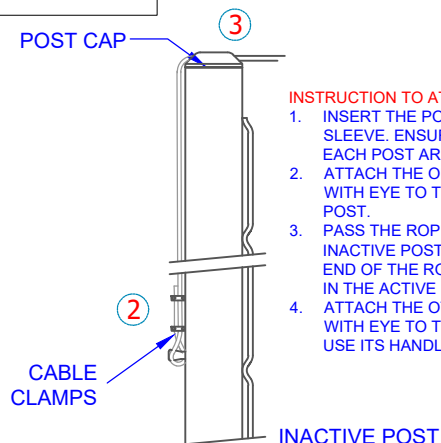
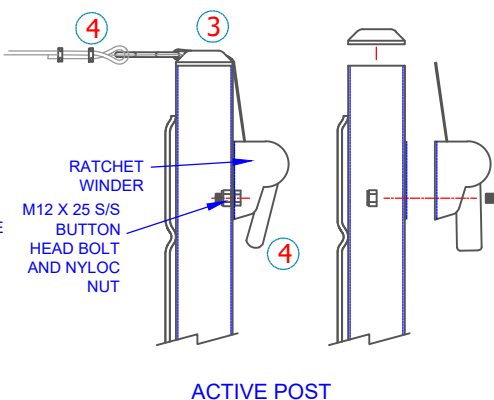


ASSEMBLY INSTRUCTIONS

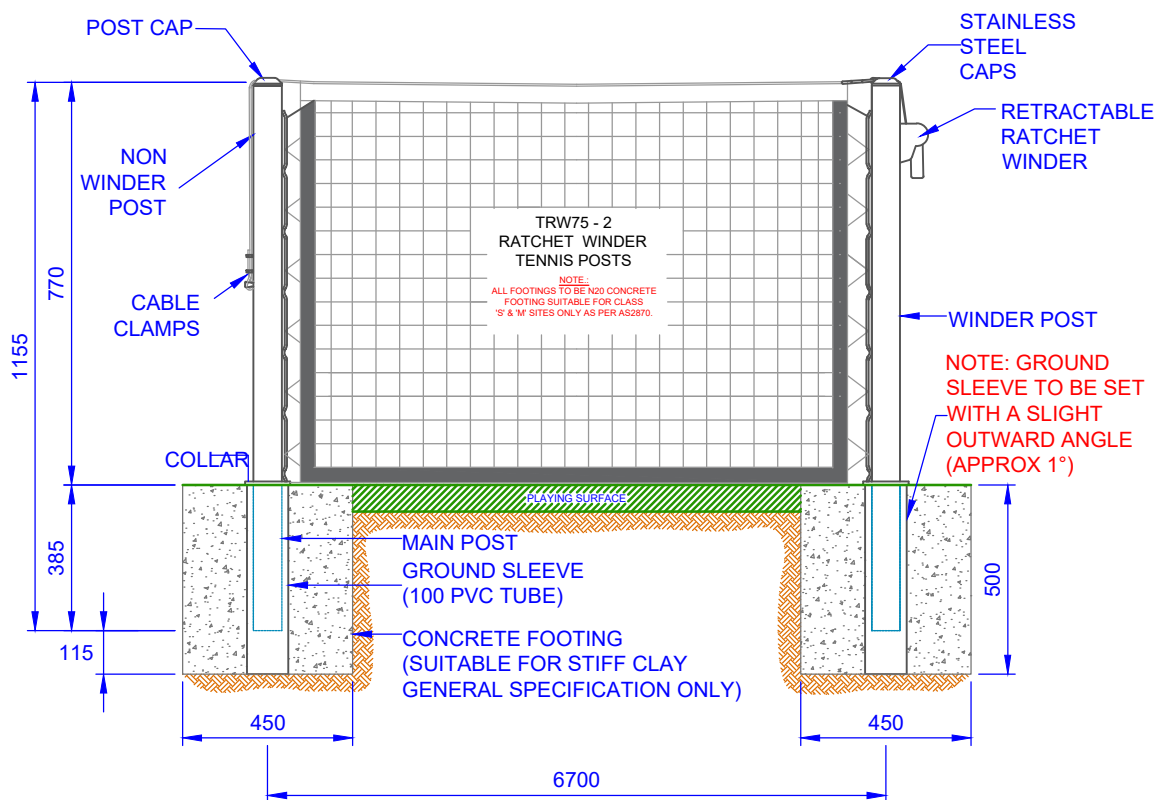


INSTRUCTION TO ATTACH NET

1. INSERT THE POST INTO THE GROUND SLEEVE. ENSURE THE WAVERAILS ON EACH POST ARE FACING EACH OTHER.
2. ATTACH THE ONE END OF THE NET ROPE WITH EYE TO THE HOOK IN THE INACTIVE POST.
3. PASS THE ROPE OVER THE GROOVE IN THE INACTIVE POST CAP AND FEED THE OTHER END OF THE ROPE THROUGH THE GROOVE IN THE ACTIVE POST.
4. ATTACH THE OTHER END OF THE ROPE WITH EYE TO THE RATCHET WINDER AND USE ITS HANDLE TO TIGHTEN THE NET.



HOT SHOTS HALF COURT TENNIS



COMPONENTS

QTY	ITEM
1	NON WINDER POST
1	WINDER POST
1	PROGRIP RETRACTABLE RATCHET (NO 330410)
1	M12 X 25 MM S/S BUTTON HEAD BOLT AND NYLOC NUT.
2	5 MM CABLE CLAMPS
2	POST COLLAR
OPTIONS	
2	PVC SLEEVE AND CAP
2	SLEEVE AND HINGED CAP

TITLE: TRW75/2 - HALF COURT RATCHET WINDER TENNIS POSTS

DRAWING NUMBER: TRW75/2 ASSEMBLY

DATE: 22/08/2023 CUBIC MEASURE: -



Oz Ring Pty Ltd
Trading as:
Play Hard Sports Equipment
ABN 79 066 094 559
24 Ern Harley Drive
Burleigh Heads Qld 4220
Phone: (07) 5593 4494
Fax: (07) 5593 4338
Website: www.playhardsports.com.au
Email: email@playhardsports.com.au