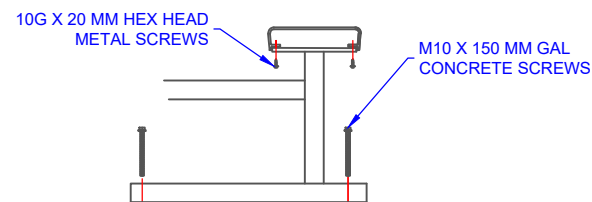
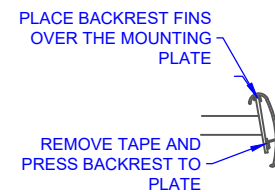
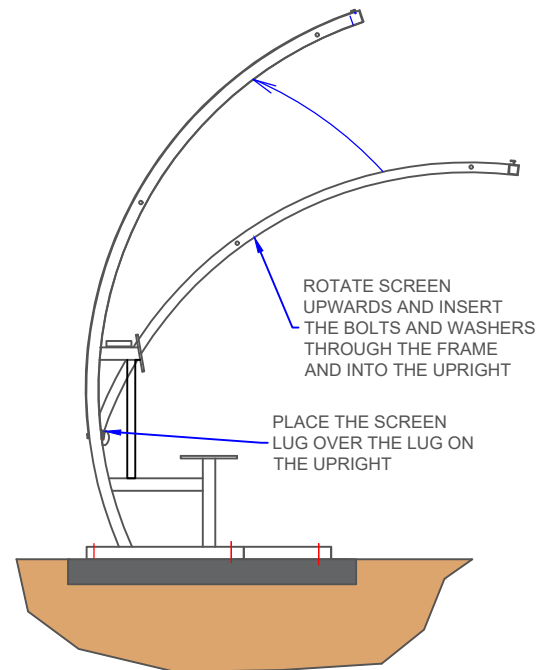


#### ASSEMBLY INSTRUCTIONS:

THE SHELTER CONSISTS OF UPRIGHT SUPPORTS, SCREEN FRAMES AND BENCH SEATING PLANKS.

1. HOLD TWO UPRIGHT SO THE SCREEN WILL FIT BETWEEN THEM.
2. PLACE THE TWO LUGS ON THE BOTTOM OF THE SCREEN INTO THE LUGS ON EACH UPRIGHT.
3. ROTATE THE SCREEN UPWARD TILL IT FITS FLUSH WITH THE UPRIGHT.
4. INSERT TWO BOLTS, WASHERS AND SPRING WASHERS THROUGH THE SCREEN FRAME AND INTO THE UPRIGHTS. LOOSELY TIGHTEN TILL ALL SCREENS ARE IN PLACE.
5. AFTER THE SHELTER IS ASSEMBLED, ALIGN ALL THE UPRIGHTS USING THE SEAT AND BACKREST PLANKS.
6. REMOVE THE TAPE COVER FILM AND REINSTALL THE SEAT AND BACKREST.
7. THERE SHOULD BE NO GAPS BETWEEN THE FRAME PANELS. ONCE ALL FRAMES AND SCREEN ARE PROPERLY ALIGNED TOGETHER, TIGHTEN ALL THE BOLTS.
8. ADJUST THE POSITION OF THE SHELTER ON THE SLAB AND MARK THE HOLE POSITIONS ON THE SLAB.
9. DRILL 10MM X 100MM ANCHOR HOLES AND BOLT THE SHELTER IN PLACE USING 10MM X 150MM CONCRETE SCREWS.



QTY	ITEM DESCRIPTION
1	LEFT END PANEL
1	RIGHT END PANEL
2	CENTRE UPRIGHT
3	SCREEN FRAME
1	SEAT PLANK 3375 MM
1	SEAT BACKREST 3375 MM
QTY	BOLT KIT
12	M10 X 60 S/S BUTTON HEAD BOLT, & SPRING WASHER M10 X 38MM MUD GUARD WASHER
8	HEX HEAD METAL SEAT SCREWS
8	M10 X 150 MM CONCRETE SCREWS

TITLE: AURORA 6 PLAYER SHELTER	
DRAWING NUMBER: ASSEMBLY	
WEIGHT: 160 KG	# OF PACKAGES -
ORDER PACKED BY:	-



**Oz Ring Pty Ltd**

Trading as:

**Play Hard Sports Equipment**

ABN 79 066 094 559

24 Ern Harley Drive

Burleigh Heads Qld 4220

Phone: (07) 5593 4494

Fax: (07) 5593 4338

Website: [www.playhardsports.com.au](http://www.playhardsports.com.au)

Email: [email@playhardsports.com.au](mailto:email@playhardsports.com.au)