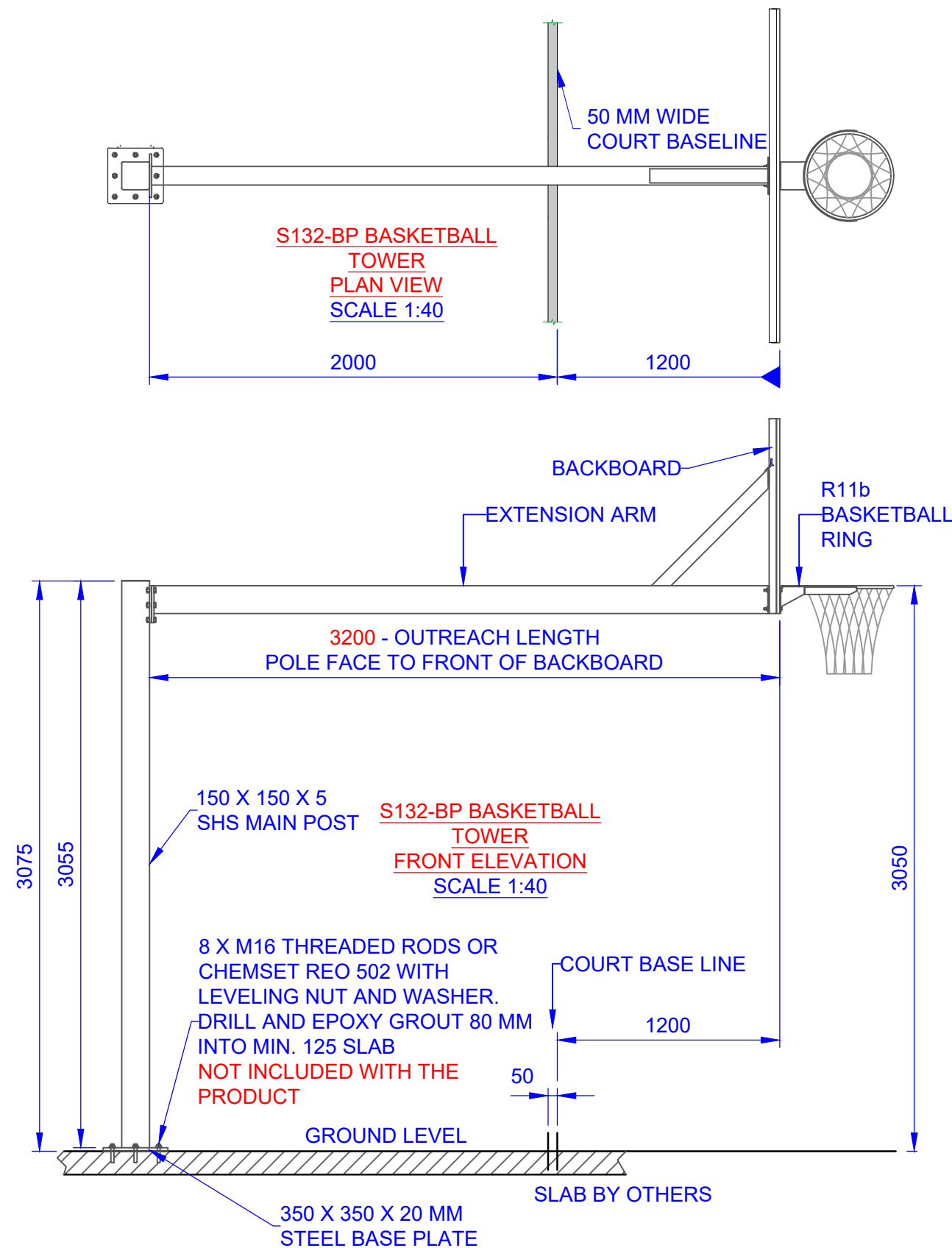


ASSEMBLY INSTRUCTIONS



INSTALLATION INSTRUCTIONS:

STEP 1: CONCRETING THE MIAN POST

- SELECT THE SITE FOR THE POST TO BE LOCATED. ENSURE THERE ARE NO OVERHEAD POWER CABLES, TREES, OR OBSTRUCTIONS.
- CORRECTLY POSITION THE POST WITH THE COURT BASELINE AS SHOWN AND MARK THE HOLES POSITION FOR THE CHEMSET ANCHORS RODS. THE ANCHOR RODS SHOULD BE 80MM MIN INTO THE SLAB. SO, DRILL AT LEAST 90-100 MM DEEP INTO THE SLAB.
- THEN, POSITION THE MAIN POST ON TOP OF THE HOLES BY ENSURING ALL HOLES ARE ALIGNED.
- INSERT THE THREADED RODS USING EPOXY GROUT INTO THE HOLES AND FIX THEM USING LEVELING NUT AND WASHER.
- USE SPIRIT LEVEL TO ENSURE POST IS CORRECTION POSITIONED IN ALL AXES AND DIRECTION.

STEP2:

- ONCE THE POST IS SET, ATTACH THE EXTENSION ARM TO THE MAIN POST USING M16 X 50 MM H.T. GAL HEX BOLT, FLAT WASHER, SPRING WASHER AND NUT.
- ALIGN THE BOLT HOLES AND INSERT THE BOLTS WITHOUT DAMAGING THE BOLT THREADS.
- RUN ALL THE NUTS UP THE BOLT SHAFT UNTIL FINGER TIGHT. CHECK FOR ANY THREAD DAMAGES IF NUTS CANNOT BE RUN UP BY HAND AND REPLACE WHEN NECESSARY.
- PAY ATTENTION TO THE DIRECTION OF INSERTION OF BOLT, WASHER AND NUTS AS SHOWN.
- USE WRENCHES TO TIGHTEN THE BOLTS TO ACHIEVE SNUG FIT.


STEP 3:

- ATTACH THE BACKBOARD TO THE EXTENSION ARM.
- HANG THE BACKBOARD FRAME VIA A ANGLED BRACKET AT THE BACK END OF THE FRAME ON TOP OF THE BRACKET AT THE EXTENSION ARM.

STEP 4:

- ALIGN THE BOLT HOLES IN THE BACKBOARD AND THE ARM AND ATTACH THE BASKETBALL RING USING M10 X 90 MM GAL HEX BOLT, DOUBLE FLAT WASHER, SPRING WASHER AND NUT.
- INSERT THE BOLTS WITHOUT DAMAGING THE THREADS. RUN ALL THE NUTS UP THE BOLT SHAFT USING FINGER TIGHT TO CHECK FOR DAMAGED THREADS.
- FIX THE TOP BOLTS FIRST AND THEN THE BOTTOM ONES.

ALL BOLTS SHOULD BE LUBRICATED USING PROPER LUBRICANT (LUBRICANT TYPE DISCRETION OF THE INSTALLER).

TITLE: S132-BP BASKETBALL TOWER ASSEMBLY INSTRUCTIONS 1 OF 2	
DRAWING NUMBER: S132-BP	DRAWN BY: UMESH
CHECKED BY: -	DATE: 26/04/2024
 <div>Oz Ring Pty Ltd Trading as: Play Hard Sports Equipment ABN 79 066 094 559 24 Ern Harley Drive Burleigh Heads Qld 4220 Phone: (07) 5593 4494 Fax: (07) 5593 4338 Website: www.playhardsports.com.au Email: email@playhardsports.com.au</div>	