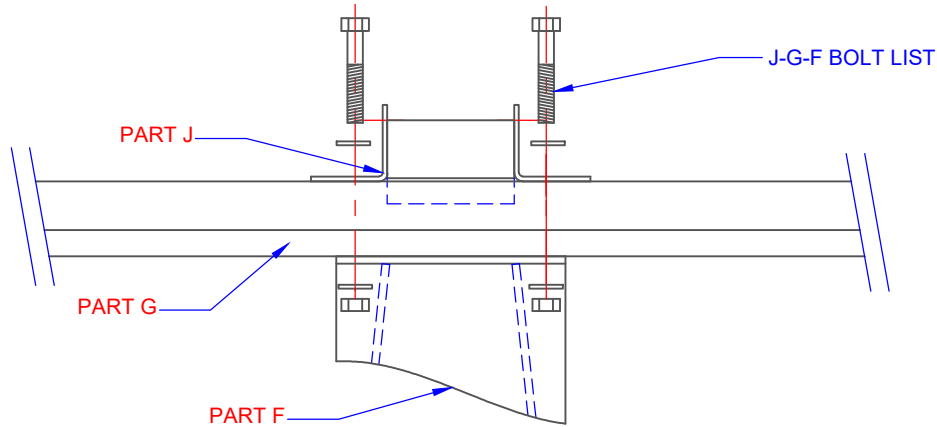
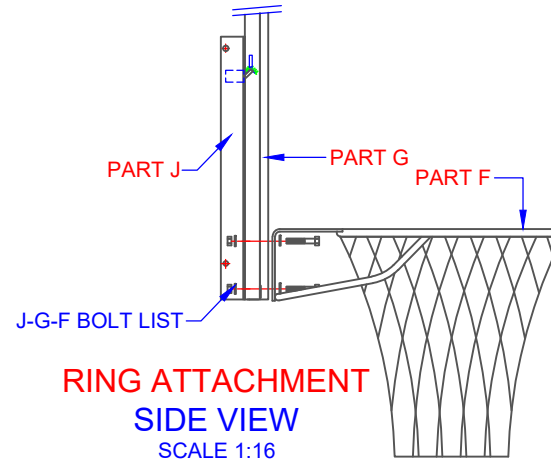


ASSEMBLY INSTRUCTIONS

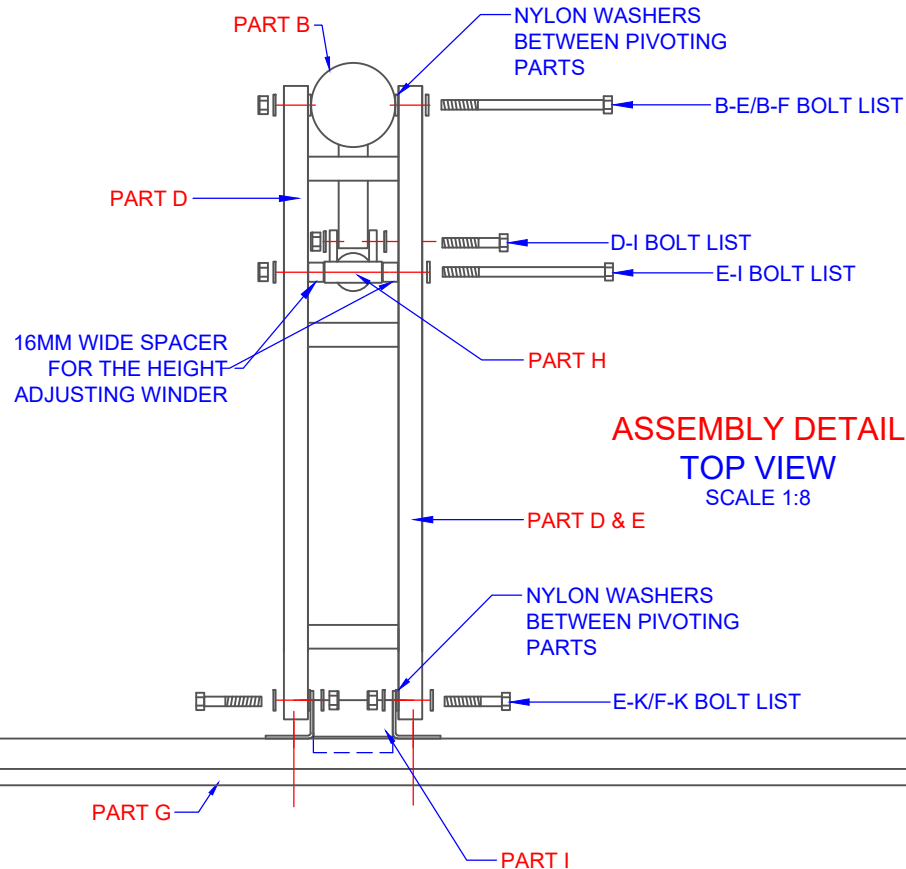
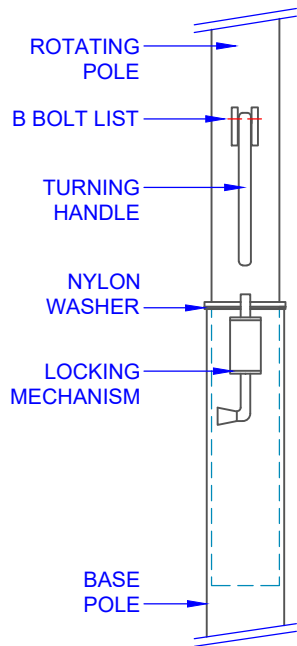
NOTE:
DO NOT OVER TIGHTEN NYLOC NUTS. THEY SHOULD
BE TIGHTENED TO REDUCE PLAY BUT STILL ALLOW
THE PIVOTING PARTS TO MOVE WITHOUT TENSION.



BACKBOARD FRAME & BRACKETS
TOP VIEW
SCALE 1:5



RING ATTACHMENT
SIDE VIEW
SCALE 1:16



ASSEMBLY DETAIL
TOP VIEW
SCALE 1:8

TITLE: GAME CHANGER BASKETBALL TOWER	
DRAWING NUMBER: GAME CHANGER ASSEMBLY 3 OF 3	
WEIGHT: -	CUBIC MEASURE
	
Oz Ring Pty Ltd Trading as: Play Hard Sports Equipment ABN 79 066 094 559 24 Ern Harley Drive Burleigh Heads Qld 4220 Phone: (07) 5593 4494 Fax: (07) 5593 4338 Website: www.playhardsports.com.au Email: email@playhardsports.com.au	