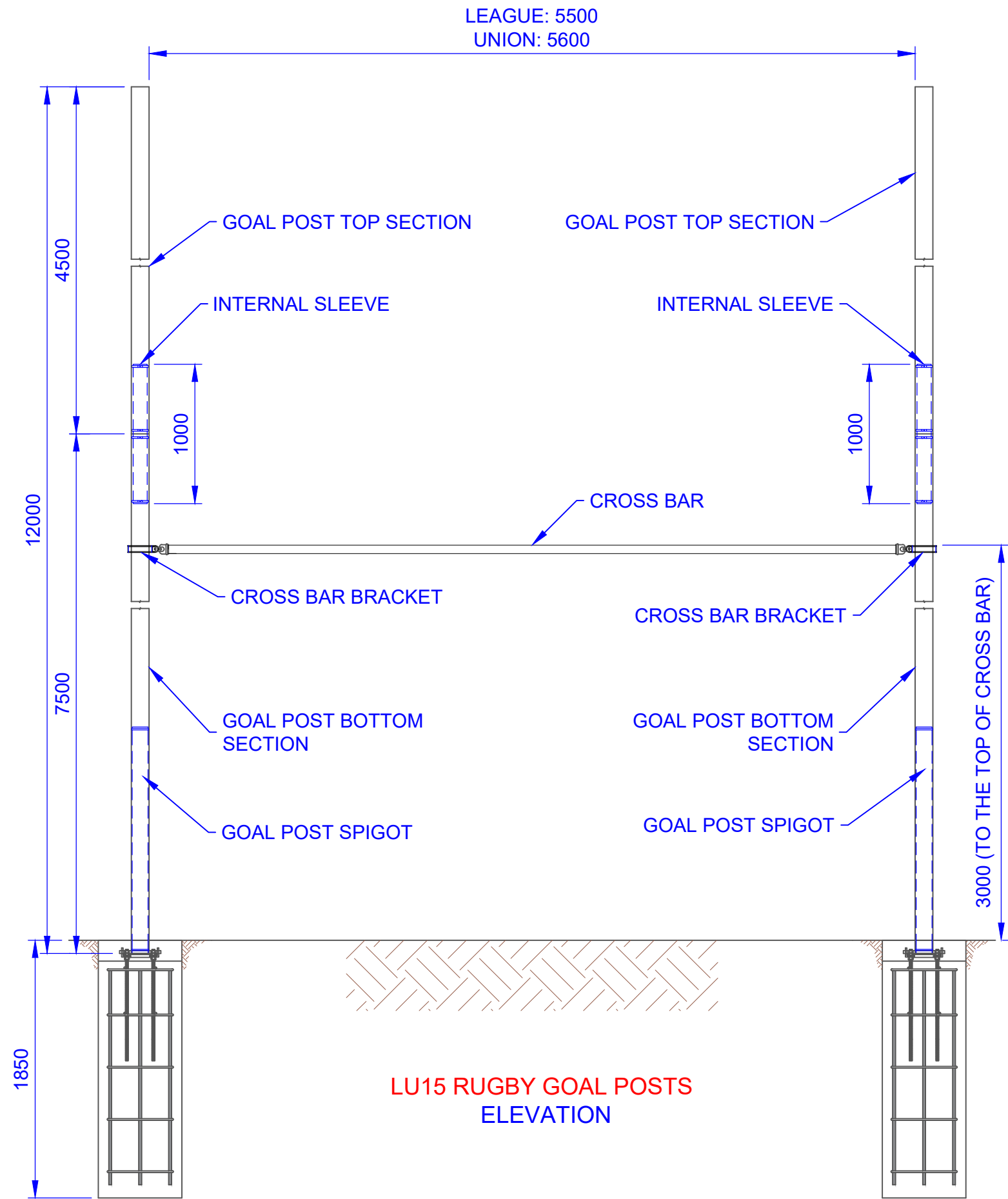
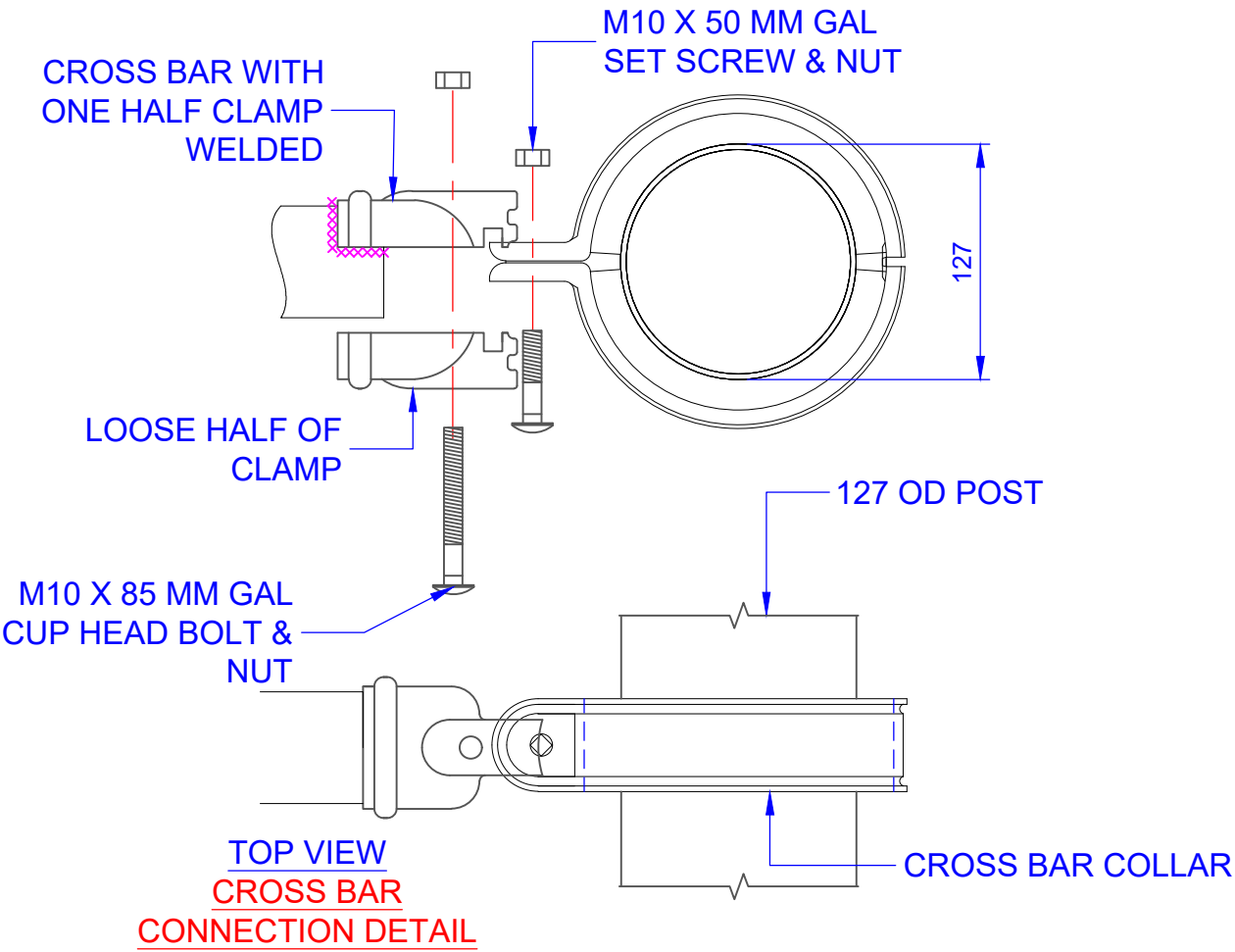


ASSEMBLY INSTRUCTIONS : FINAL ASSEMBLY VIEW



COMPONENTS FOR ONE FIELD - ONE PAIR	
QTY	ITEM
4	GOAL POST BOTTOM SECTION 127 OD
4	GOAL POST TOP SECTION 127 OD
2	CROSS BAR
4	CROSS BAR CLAMPS
4	POST HINGE SPIGOTS
4	FOOTING CAGE
8	ANGLE IRON HINGE BRACKETS
8	HALF DIRT COVERS
16	M20 GAL NUTS AND GAL WASHER
24	14g X 35 MM PAN HEAD METAL SCREW
4	M10 X 85 MM GAL CUP HEAD BOLT & NUT
4	M10 X 50 MM GAL SET SCREW & NUT



TITLE: LU12 RUGBY GOAL POSTS ASSEMBLY DETAILS 3 OF 3	
DRAWING NUMBER: LU12	ISSUED ON: 01/08/2024
	Oz Ring Pty Ltd Trading as: Play Hard Sports Equipment ABN 79 066 094 559 24 Em Harley Drive Burleigh Heads Qld 4220 Phone: (07) 5593 4494 Fax: (07) 5593 4338 Website: www.playhardsports.com.au Email: email@playhardsports.com.au