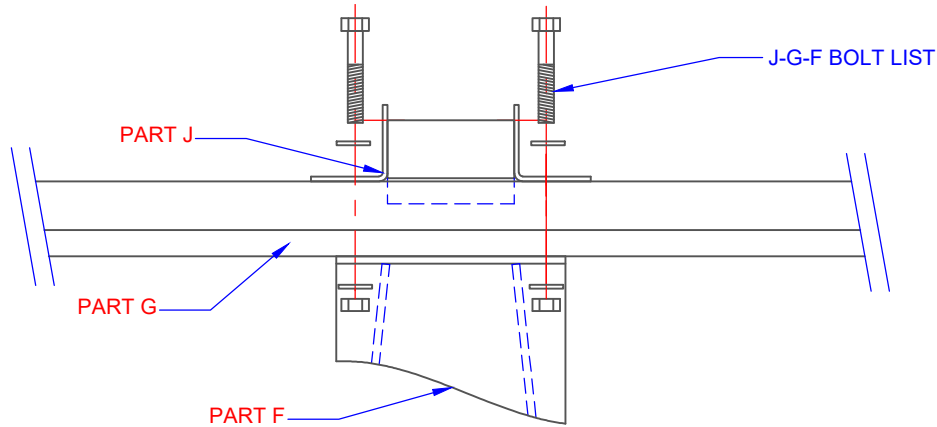
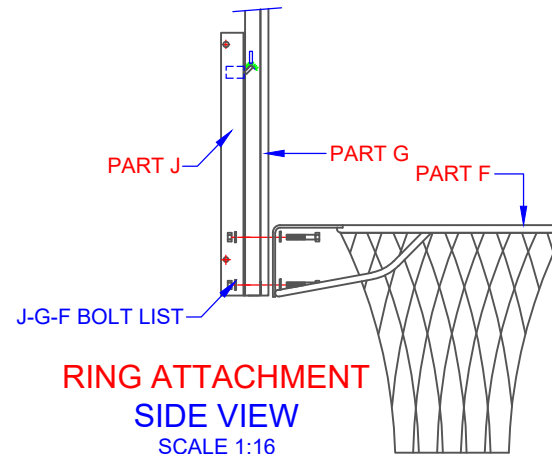


ASSEMBLY INSTRUCTIONS

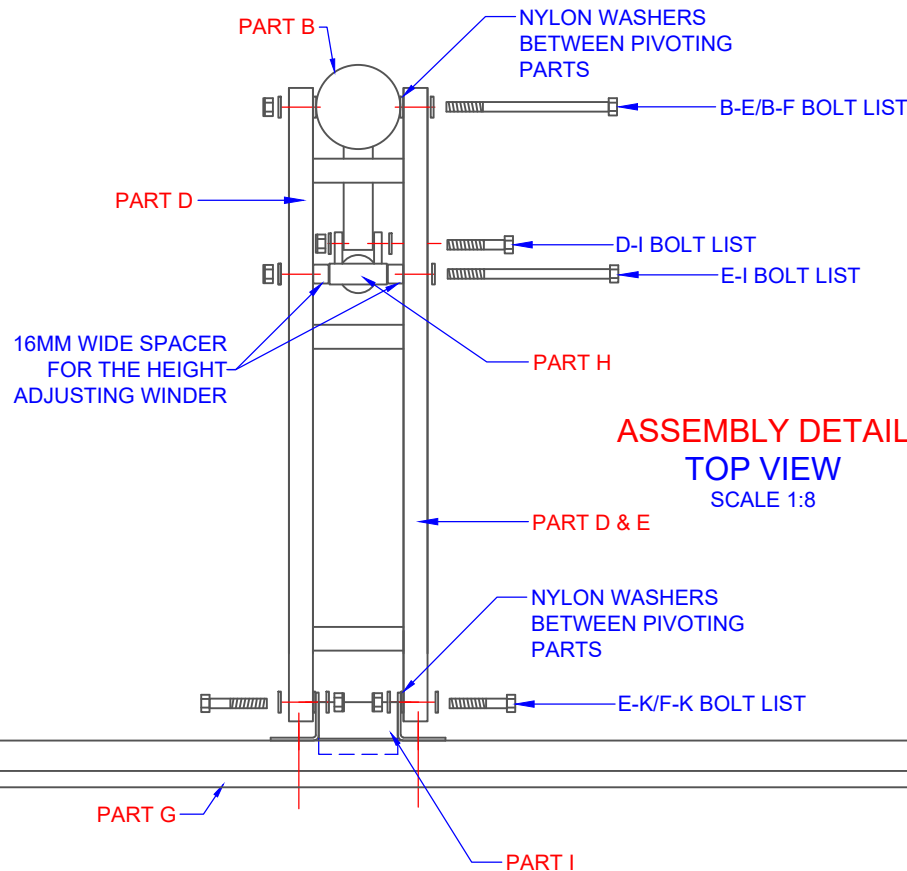
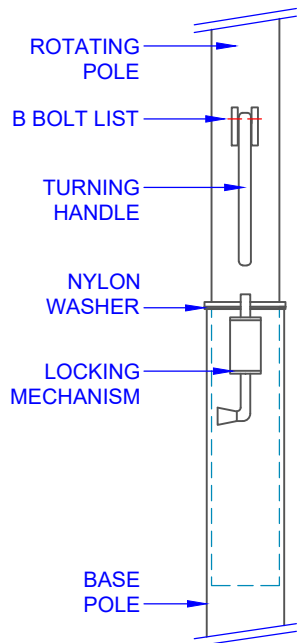


BACKBOARD FRAME & BRACKETS
TOP VIEW
SCALE 1:5




RING ATTACHMENT
SIDE VIEW
SCALE 1:16

NOTE:
DO NOT OVER TIGHTEN NYLOC NUTS. THEY SHOULD
BE TIGHTENED TO REDUCE PLAY BUT STILL ALLOW
THE PIVOTING PARTS TO MOVE WITHOUT TENSION.



ASSEMBLY DETAIL
TOP VIEW
SCALE 1:8

TITLE: POWER PRO BASKETBALL TOWER	
DRAWING NUMBER: POWER PRO ASSEMBLY 3 OF 3	
WEIGHT: -	CUBIC MEASURE
	
Oz Ring Pty Ltd Trading as: Play Hard Sports Equipment ABN 79 066 094 559 24 Ern Harley Drive Burleigh Heads Qld 4220 Phone: (07) 5593 4494 Fax: (07) 5593 4338 Website: www.playhardsports.com.au Email: email@playhardsports.com.au	