



2/3/2025

ARIES FUTSAL SYSTEM

Installation, Operation &
Maintenance Manual

PLAY HARD SPORTS EQUIPMENT

13 Alex Fisher Drive
Burleigh Heads, QLD 4220

Contents

Introduction.....	2
Installation Instructions.....	3
Identification of Supplied Items	3
Footing Details	4
Assembly	6
Maintenance	8
Replacement Items	8
Warranty:	9

Introduction

ARIES system is a combination of Futsal and Basketball designed and built by Play Hard Sports Equipment and Structurally Certified by a Structural Engineer. The unit can be installed in half courts, public space areas or private homes. The whole unit has been made using galvanised steel. The basketball unit has a B18f backboard, and a Pro Rim R11b.

B18f Backboard: The backboard is 1800 x 1050mm, with 50mm wide black markings which are painted onto the board. The backboard is fixed to an Aluminium frame in the factory using a noise-dampening material, reducing the noise from ball rebounding. The backboard can be Polyboard, acrylic, or glass.

Pro Rim R11b: The heavy-duty basketball ring is made from high tensile steel, which has been load tested to 300kg. The ring is bolted through the backboard and backboard frame. The frame then attaches to the tower. This takes any load off the backboard thus increasing the life of the board. The R11b ring has a lifetime guarantee.

The basketball unit meets the QLD Education specifications for basketball equipment and meets the Compliance Certificate for Building Design or Specification. All designs and drawings remain the Intellectual Property of Play Hard Sports Equipment and may not be used without approval.

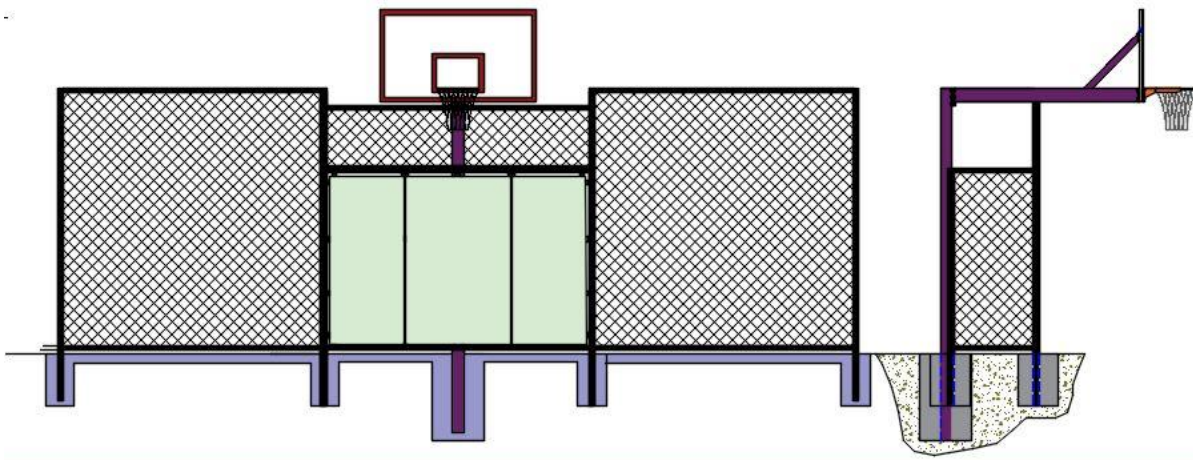


Fig: ARIES Combination Futsal and Basketball

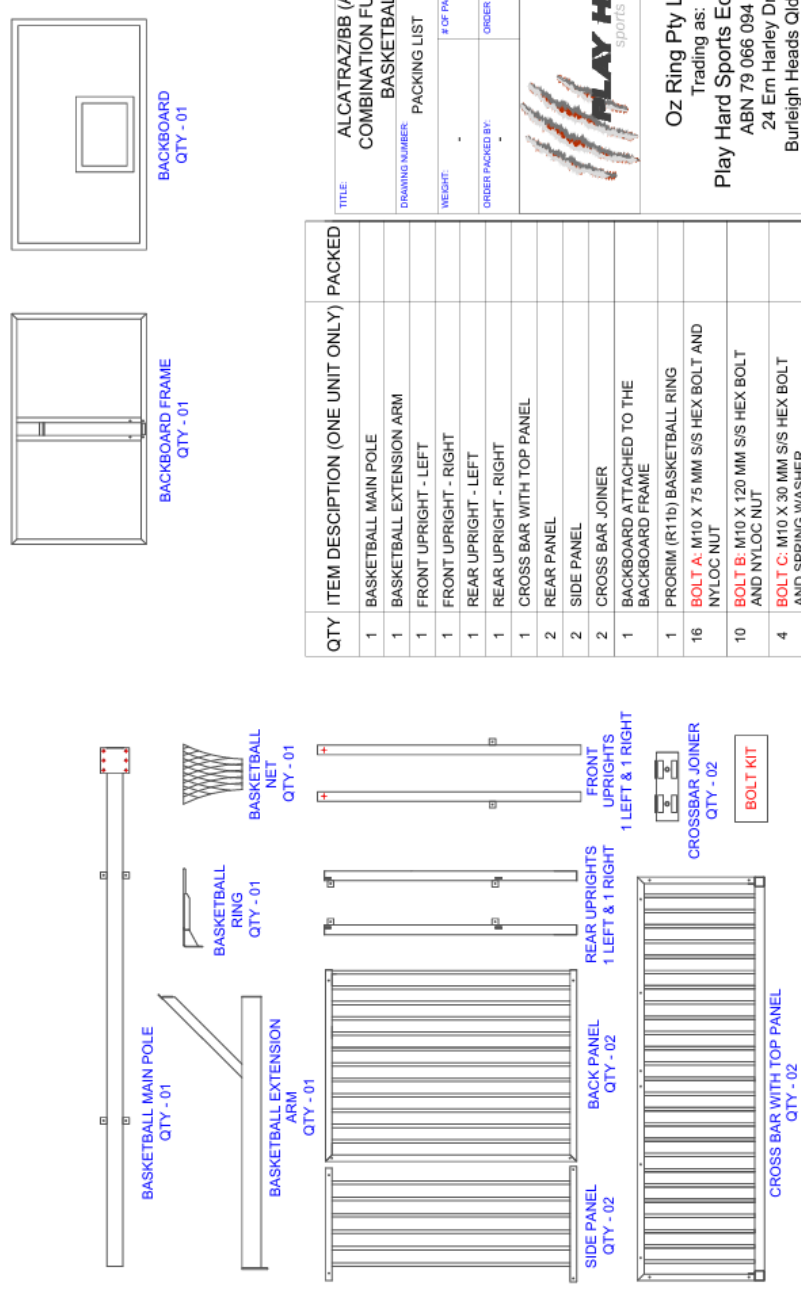
Installation Instructions

Identification of Supplied Items

Please refer to the parts list provided to check if you have received all the items required for the installation of the system. Contact us immediately if any parts are missing. Please mind that some of the parts may have already been pre-assembled and some of the fasteners and fittings may have been already fitted to the parts.

PACKING LIST (per unit)

Please check your order. If any items are missing please call immediately.



QTY	ITEM DESCRIPTION (ONE UNIT ONLY)	PACKED
1	BASKETBALL MAIN POLE	
1	BASKETBALL EXTENSION ARM	
1	FRONT UPRIGHT - LEFT	
1	FRONT UPRIGHT - RIGHT	
1	REAR UPRIGHT - LEFT	
1	REAR UPRIGHT - RIGHT	
1	CROSS BAR WITH TOP PANEL	
2	REAR PANEL	
2	SIDE PANEL	
2	CROSS BAR JOINER	
1	BACKBOARD ATTACHED TO THE BACKBOARD FRAME	
1	PRORIM (R11D) BASKETBALL RING	
16	BOLT A: M10 X 75 MM S/S HEX BOLT AND NYLOC NUT	
10	BOLT B: M10 X 120 MM S/S HEX BOLT AND NYLOC NUT	
4	BOLT C: M10 X 30 MM S/S HEX BOLT AND SPRING WASHER	
4	BOLT D: M10 X 90 MM GAL HEX BOLT, DOUBLE FLAT WASHER, SIWASHER & NUT	
6	BOLT E: M16 X 50 MM H.T. GAL HEX BOLT, DOUBLE FLAT WASHER AND NUT	

ALCATRAZ/BB (ARIES) COMBINATION FUTSAL & BASKETBALL

PACKING LIST


DRAWING NUMBER: -

WEIGHT: -

OF PACKAGES: -

ORDER CHECKED BY: -

ORDER PACKED BY: -



Oz Ring Pty Ltd
Trading as:
Play Hard Sports Equipment
ABN 79 066 094 559
24 Ern Harley Drive
Burleigh Heads Qld 4220
Phone: (07) 5593 4494
Fax: (07) 5593 4338
Website: www.playhardsports.com.au
Email: email@playhardsports.com.au

Fig: ARIES Packing List

13 Alex Fisher Drive, Burleigh Heads, QLD 4220 (Australia)

Ph: 1300 851 518 | +61 7 5593 4494

Email: email@playhardsports.com.au | W: www.playhardsports.com.au

Footing Details

The details for the footing layout for the Aries System are shown in the image below. Please ensure that the Main Pole face is square to the desired playing direction when concreting, and the Pole is concreted at the right distance from the baseline depending on the basketball outreach.

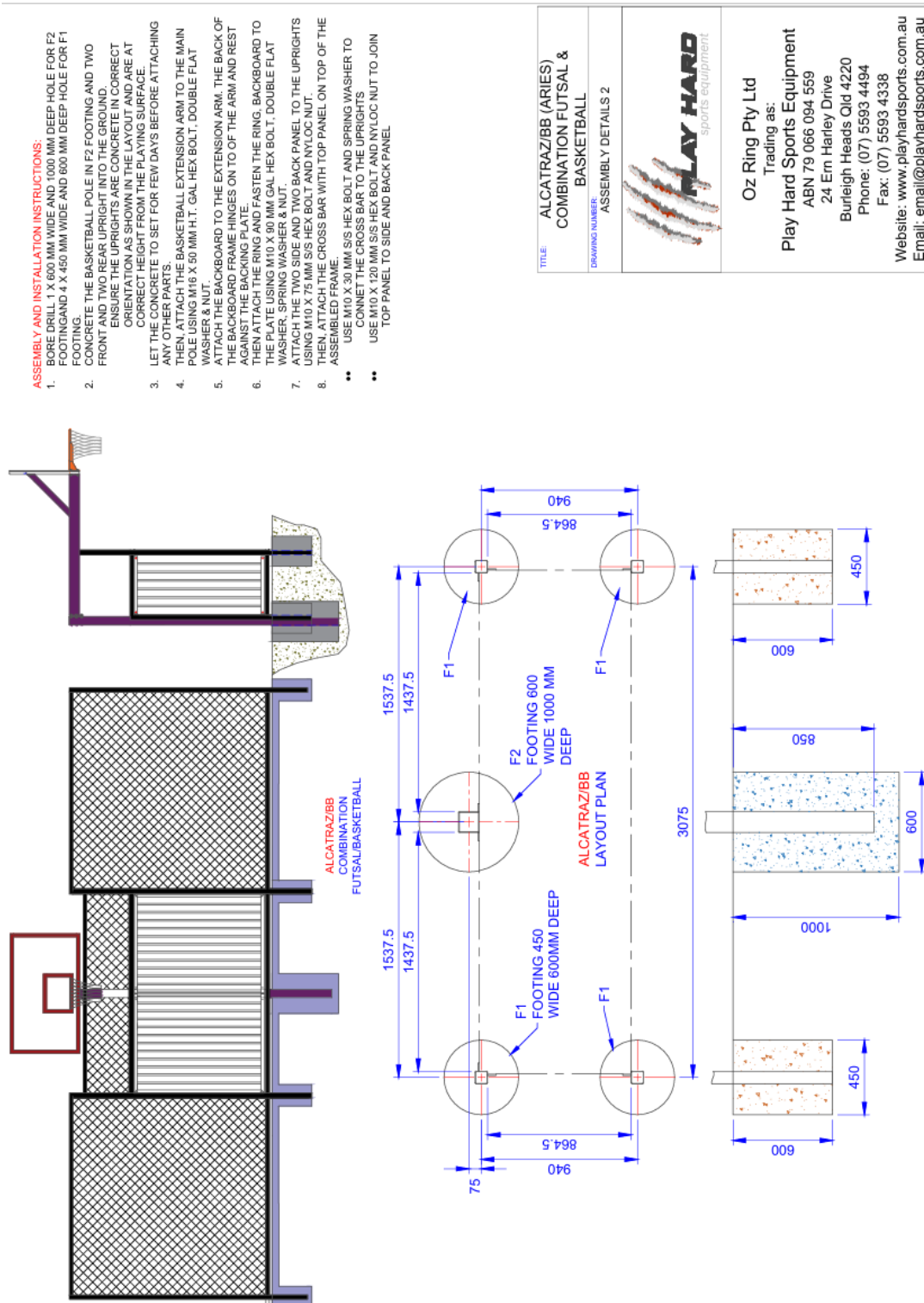


Fig: Aries Footing Details

13 Alex Fisher Drive, Burleigh Heads, QLD 4220 (Australia)

Ph: 1300 851 518 | +61 7 5593 4494

Email: email@playhardsports.com.au | W: www.playhardsports.com.au

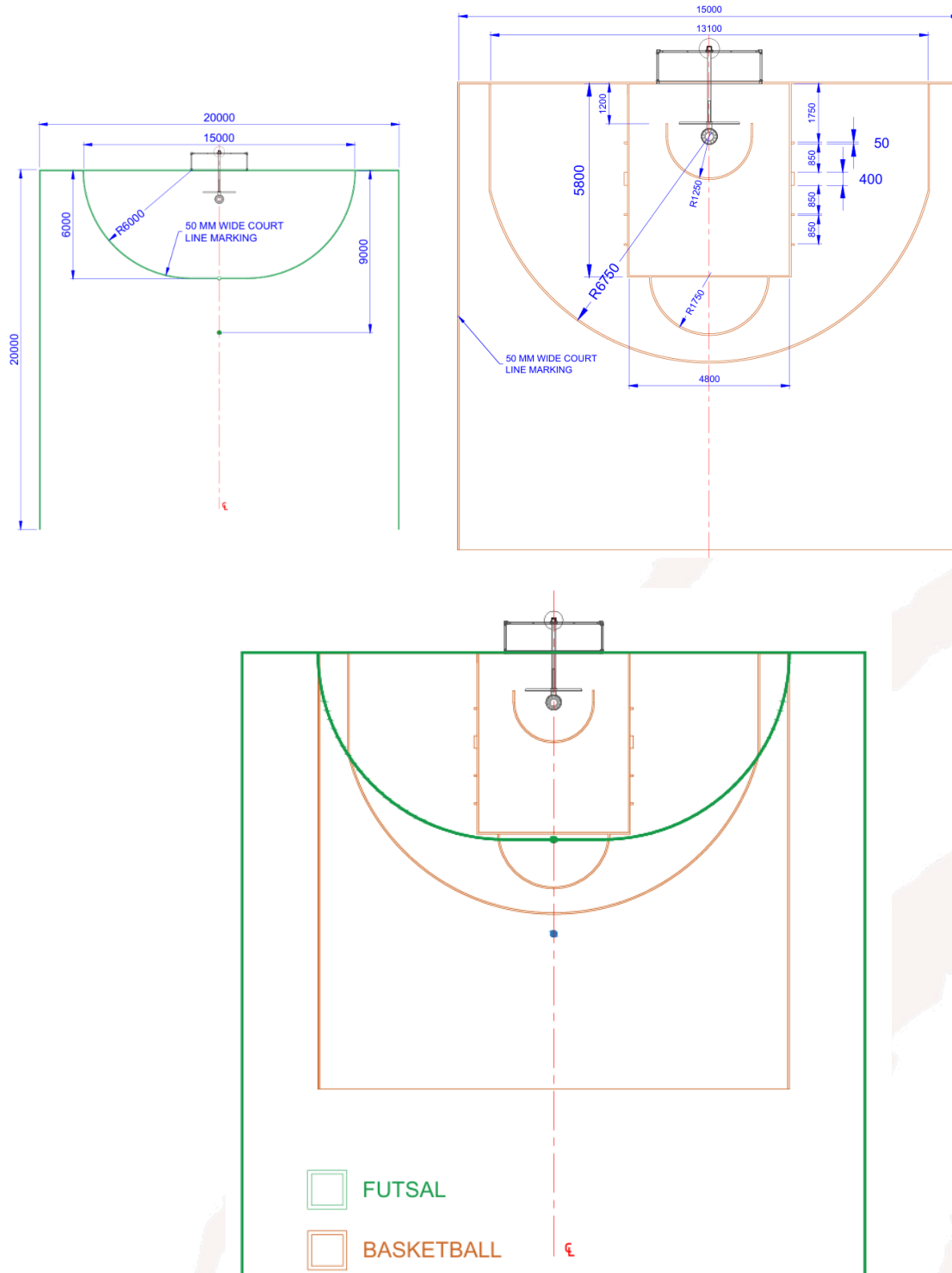


Fig: Aries Court Layout

Assembly

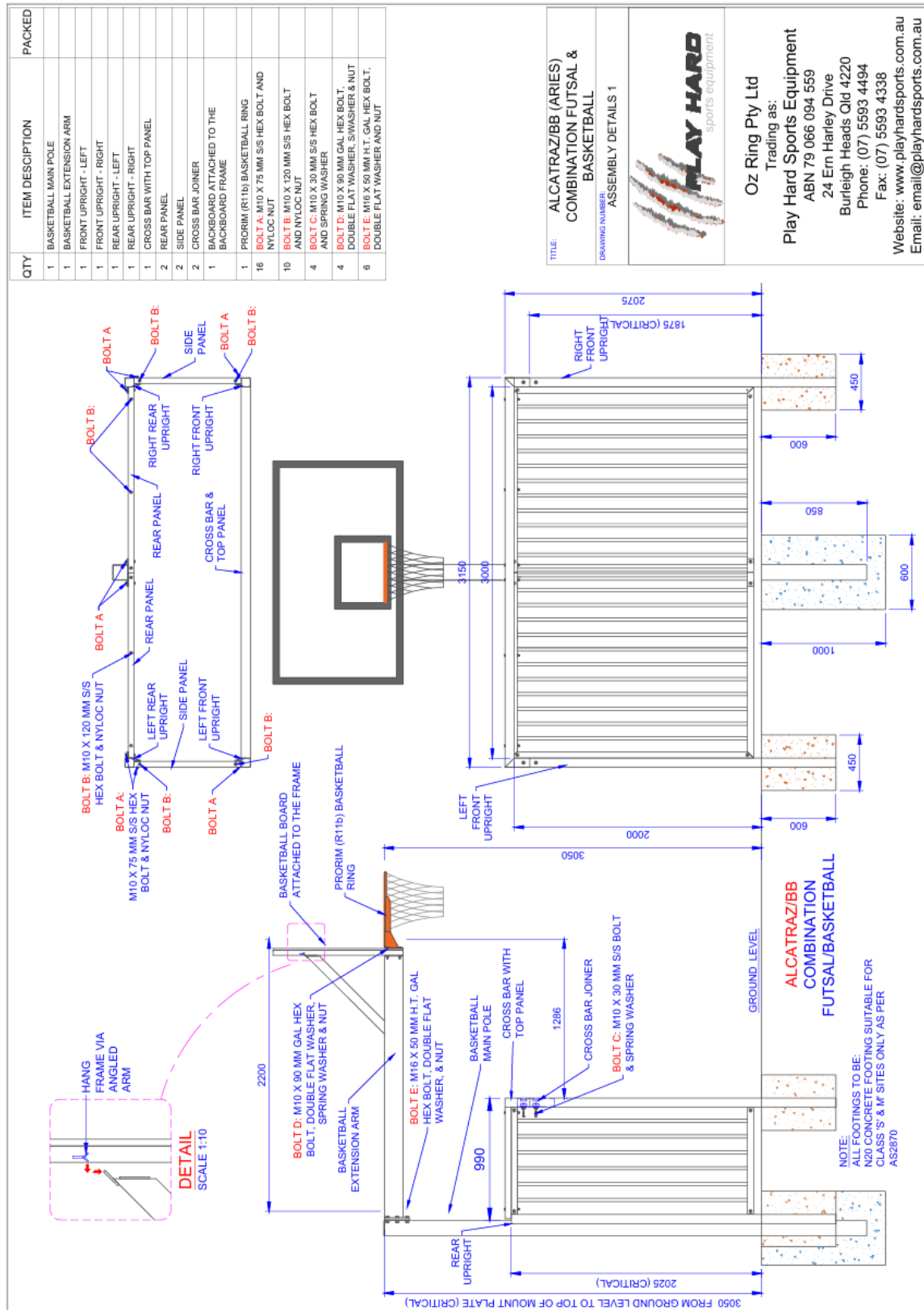


Fig: Aries Assembly 1 of 2

13 Alex Fisher Drive, Burleigh Heads, QLD 4220 (Australia)

Ph: 1300 851 518 | +61 7 5593 4494

Email: email@playhardsports.com.au | W: www.playhardsports.com.au

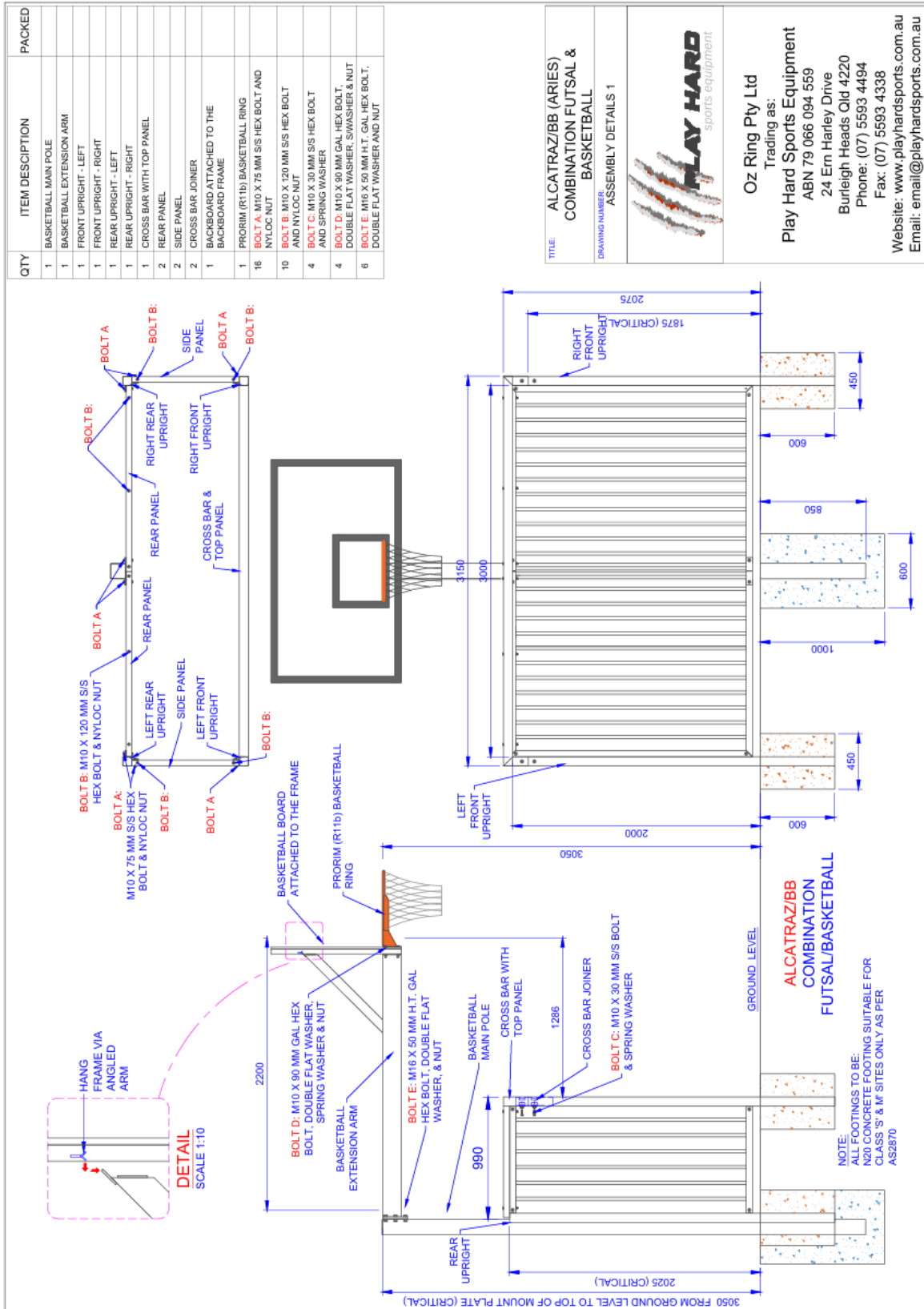


Figure: Aries Assembly 2 of 2

13 Alex Fisher Drive, Burleigh Heads, QLD 4220 (Australia)

Ph: 1300 851 518 | +61 7 5593 4494

Email: email@playhardsports.com.au | W: www.playhardsports.com.au

Maintenance

1. Regularly check all bolts on the unit to ensure they have not loosened.
2. Check that the backboard is secured to the frame.
3. Whilst the equipment is hot dip galvanized it is always advisable to check for any areas of rust and apply cold gal spray if this occurs and apply spray paint with gloss black.
4. If the backboard becomes dirty- wipe it over with a wet rag.

Replacement Items

Backboard:	B1810p
Basketball ring:	Pro Rim R11b
Net:	BN6

Warranty Certificate:



When you purchase a Play Hard Sports Equipment product you have the peace of mind in knowing that your product is covered by Play Hard Sports Equipment's 10-year manufacturer's warranty against faulty workmanship and materials.

The warranty covers damage or failure of the product during normal intended use. The warranty does not include damage to the product resulting from accident, misuse, improper installation, operation, or unauthorised repair or alteration. Products manufactured for home use are not guaranteed for use in commercial applications.

If the product should become defective within the warranty period, please get in touch with Play Hard Sports Equipment customer service:

24 Ern Harley Drive
Burleigh Heads QLD 4220

Ph: (07) 55934494

Fax: (07) 55934338

Email: email@playhardsports.com.au